

WALTER K.



---

STOFFE  
*Fabrics*

NATURAL ELEGANCE

## INHALT / CONTENT

---

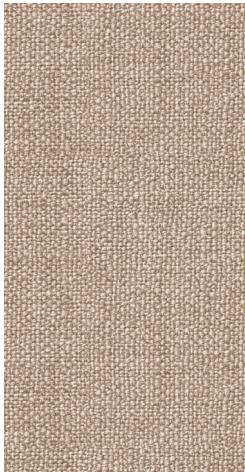
|                             |               |
|-----------------------------|---------------|
| AFRICA I                    | Seite/page 3  |
| AFRICA II                   | Seite/page 4  |
| ATACAMA                     | Seite/page 5  |
| CHESS                       | Seite/page 6  |
| CHOCOLATE                   | Seite/page 7  |
| ICELAND                     | Seite/page 8  |
| LIMESTONE                   | Seite/page 9  |
| MINERAL                     | Seite/page 10 |
| MOONLIGHT                   | Seite/page 11 |
| OFF WHITE                   | Seite/page 12 |
| PEARL                       | Seite/page 13 |
| SHADOW                      | Seite/page 14 |
| TIMBER                      | Seite/page 15 |
| DIVINA 3 & DIVINA MELANGE 2 | Seite/page 16 |

## AFRICA I

---

Die Farben Afrikas: Das Rot der Erde im Nationalpark in Kenia, die Farben der Gewürze auf dem Basar in Marrakesch, das Blütenmeer im gelben Sand der Wüste – Africa I spielt mit den leuchtenden Farben des Kontinents.

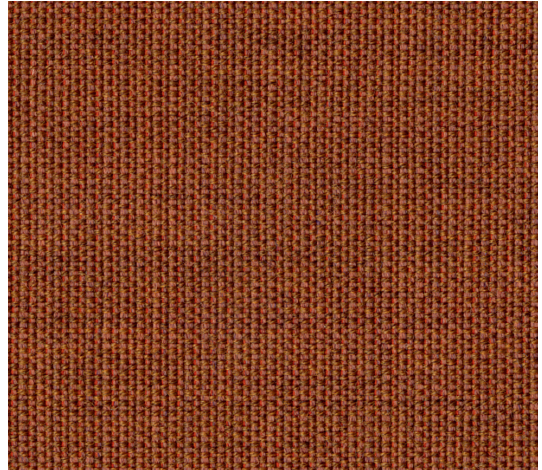
*The colors of Africa: the red of planet Earth in the national park of Kenya, the colors of the spices on the bazaar in Marrakech, the sea of flowers in the yellow sand of the desert – Africa I plays with the bright colors of the continent.*



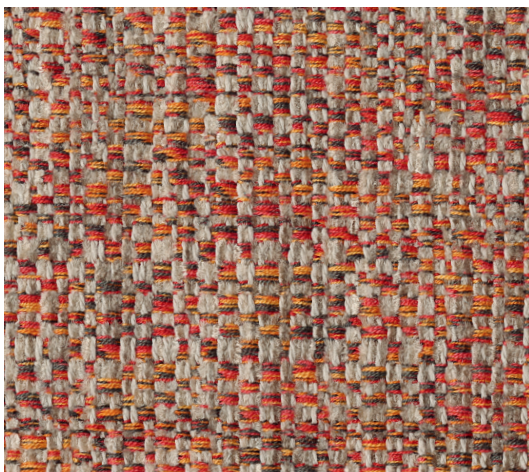
7889 CHAMPAGNE  
*Gaia* | PG 25



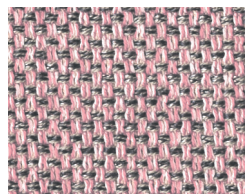
7686 TOMATO  
*Lucia* | PG 26



454 SAFFRON  
*Canvas* | PG 26



7690 CARNELIAN  
*Kimali* | PG 27



7744 ROSE QUARTZ  
*Loft* | PG 25

## AFRICA II

---

Blühende Wüsten, Oasen und fruchtbares Land - das Leben zwischen Wüste und Wasser war Inspiration für die Farbwelt Africa II. Brillante Gelb- und Blautöne sorgen für strahlende Akzente.

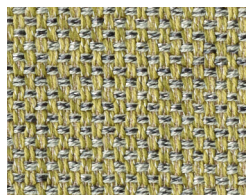
*Blossoming deserts, oases and fertile land – life between desert and water was the inspiration for the color world Africa II. Brilliant yellow and blue tones provide radiant accents.*



7694 CORN  
*Lucia | PG 26*



7689 LIME  
*Lucia | PG 26*



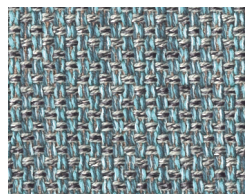
7743 KIWI  
*Loft | PG 25*



7688 TURQUOISE  
*Lucia | PG 26*



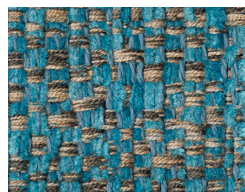
7692 BLUEWASH  
*Kimali | PG 27*



7742 AZURE  
*Loft | PG 25*



7886 TOURMALINE  
*Gaia | PG 25*



7693 AQUA  
*Kimali | PG 27*



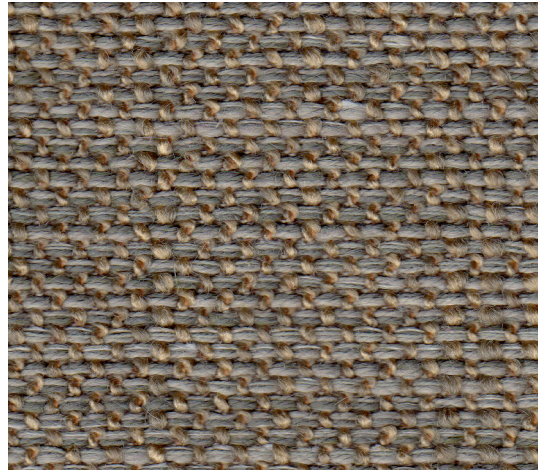
## ATACAMA

---

Die felsigen Formationen der Steinwüste: Atacama spielt mit Texturen, Haptik und Farben in edlen Braun- und Beigetönen.  
*The rocky formations of the stone desert: Atacama plays with textures, haptics and colors in noble brown and beige tones.*



7835 CHAMPAGNE  
*Lumi | PG 27*



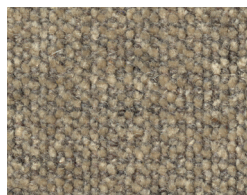
7698 CINNAMON  
*Lucia | PG 26*



7623 SAHARA  
*Tonga | PG 25*



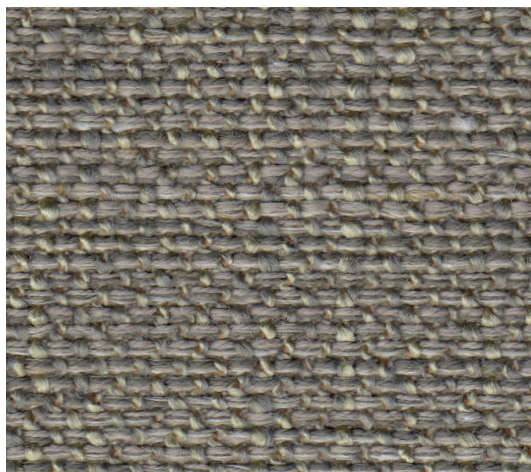
7751 MELANGE  
*Puro | PG 28*



7841 SAND  
*Doux | PG 30*



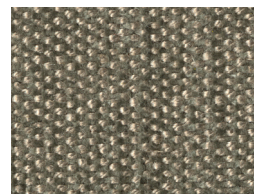
7622 AMBER  
*Tonga | PG 25*



7695 NUTMEG  
*Lucia | PG 26*



7759 MINERAL  
*Puro | PG 28*



7845 ALMOND  
*Garbo | PG 25*



7831 MACCHIATO  
*Bogar | PG 40*



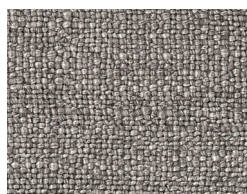
7753 SISAL  
*Puro | PG 28*

## CHESS

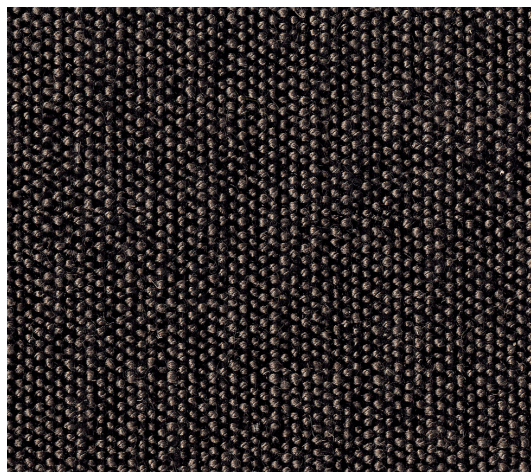
---

Subtile Schattierungen in dunklen Grau- bis Blautönen sowie Schwarz-Weiß-Strukturen gestalten die Farbwelt Chess. Intensiv und ausdrucksstark mit großer Tiefe.

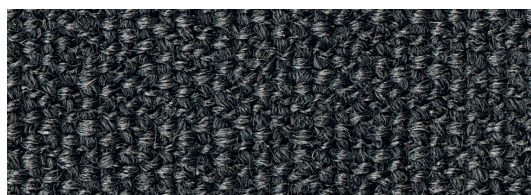
*Subtle nuances in dark grey and blue shades as well as black and white structures create the color world Chess. Intense and expressive with great depth.*



7891 PLATIN  
Gaia | PG 25



7736 CHESS  
Garbo | PG 25



7617 CHESS  
Tonga | PG 25



## CHOCOLATE

---

Eine Melange verschiedener warmer Brauntöne – ergänzt durch dunkle Rotnuancen. Eine Harmonie der Farben, ruhig und sinnlich.  
*A mixture of different warm brown tones complemented by dark red nuances. A harmony of colors, calm and sensual.*



7747 FANGO  
*Bora* | PG 26



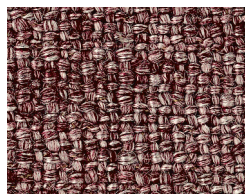
7734 CHOCOLATE  
*Tao* | PG 26



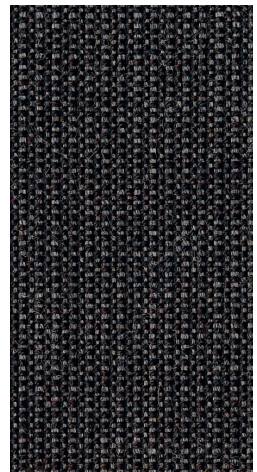
7888 QUARTZ  
*Gaia* | PG 25



7850 TOBACCO  
*Togba* | PG 25



7887 AMETHYST  
*Gaia* | PG 25



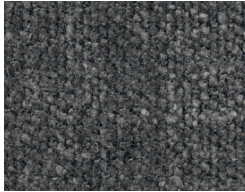
174 CHOCOLATE  
*Canvas* | PG 26

## ICELAND

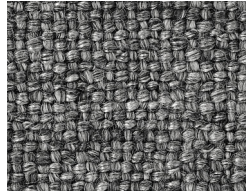
---

Die faszinierende Vulkanlandschaft Islands ist das Thema dieser Farbwelt. Ausgewählte Materialien in feinen Tönen wie granite, ash und basalt evozieren Erinnerungen an die bizarre Schönheit von Lavagesteins- und Gletscherlandschaften.

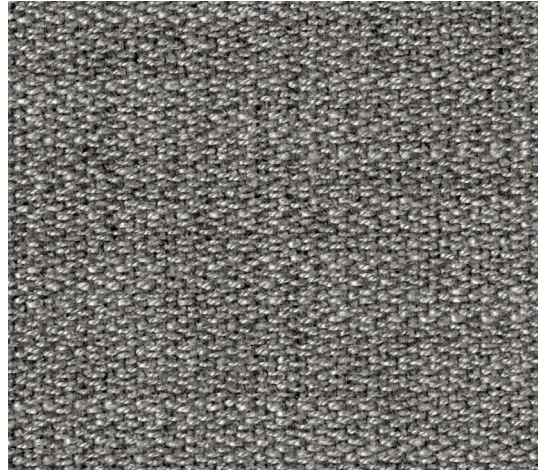
*The fascinating volcanic landscape of Iceland is the theme of this color world. Selected materials in fine tones such as granite, ash and basalt evoke memories of the peculiar beauty of lava rock and glacier landscapes.*



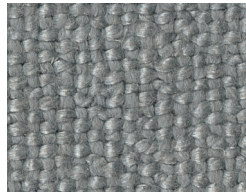
7840 GRANITE  
*Doux | PG 30*



7890 SILVER  
*Gaia | PG 25*



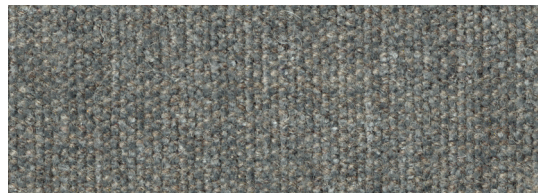
7866 SILVER  
*Sonora | PG 27*



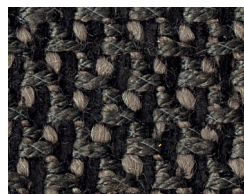
7754 SILVER  
*Puro | PG 28*



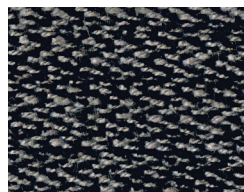
7861 SILVER  
*Dahna | PG 28*



7842 MINERAL  
*Doux | PG 30*



7830 NIGHTSHADE  
*Bogar | PG 40*



7869 BASALT  
*Sonora | PG 27*



## LIMESTONE

---

Eine Interpretation von Strukturen in sanften, von Kalkstein inspirierten Beige- und Grautönen. Stoffe unterschiedlicher Haptik, in verschiedenen Schattierungen und Nuancen, die ihre kultivierte Natürlichkeit und sensible Struktur zeigen.

*An interpretation of structures in soft beige and grey tones inspired by limestone. Fabrics with different haptics, different shades and nuances that show their cultivated naturalness and sensitive structure.*



7750 CREAM  
*Puro* | PG 28



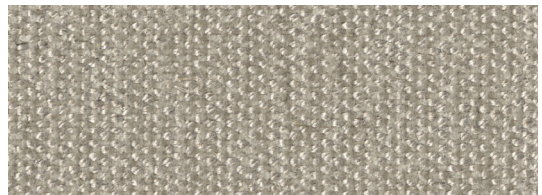
7832 PLATINUM  
*Bogar* | PG 40



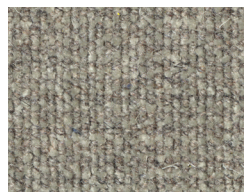
7846 SHELL  
*Garbo* | PG 25



7843 PEBBLE  
*Doux* | PG 30



7847 CASHMERE  
*Garbo* | PG 25



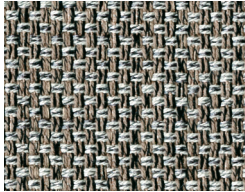
7844 GREIGE  
*Doux* | PG 30

## MINERAL

---

Die Farben der Erde: Im Spiel feiner Farbschattierungen von Grau bis hin zu Blau nuances entfaltet diese Farbwelt ihre besondere Wirkung. So facettenreich wie die Natur.

*The colors of planet Earth: this color world is at its best thanks to the interplay of fine color shades between grey and blue. As multifaceted as nature.*



7741 BARK  
Loft | PG 25



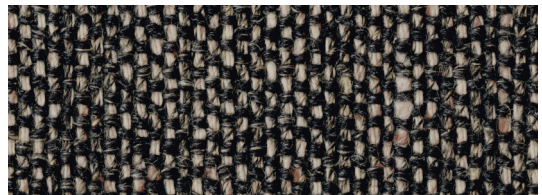
7851 GOLDEN SAND  
Togba | PG 25



7852 BLUE BRONZE  
Togba | PG 25



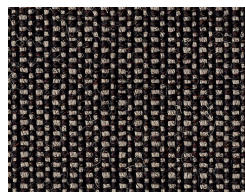
7681 MINERAL  
Lucia | PG 26



7853 LAVA  
Togba | PG 25



7680 MOONLIGHT  
Lucia | PG 26



154 MINERAL  
Canvas | PG 26



7854 PEBBLE  
Togba | PG 25

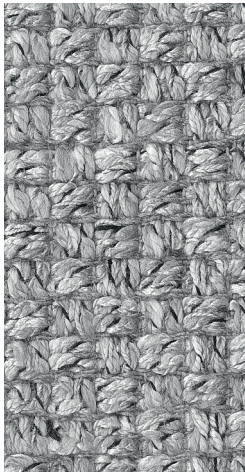


## MOONLIGHT

---

Wie magisch angezogen vom Licht des Mondes, spielen diese Stoffe mit Farben von coal bis silver. Schimmernd und leicht, Sternenstaub fürs Interieur.

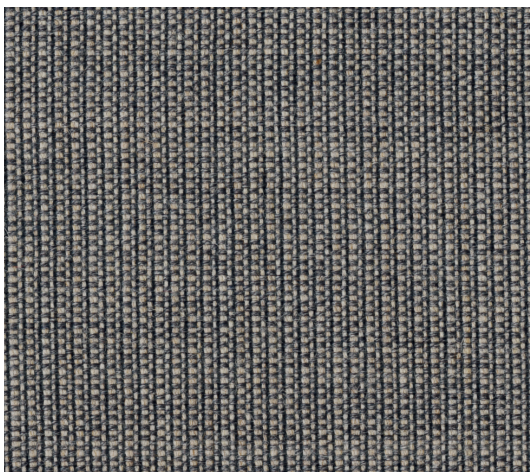
*Magically attracted to moonlight, these fabrics play with colors from coal to silver. Full of light and shimmering, stardust for the interior.*



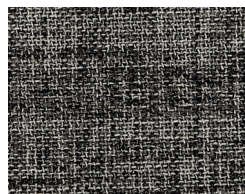
7823 MOONLIGHT  
Carré | PG 27



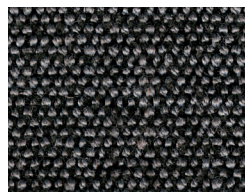
7732 SILVER  
Tao | PG 26



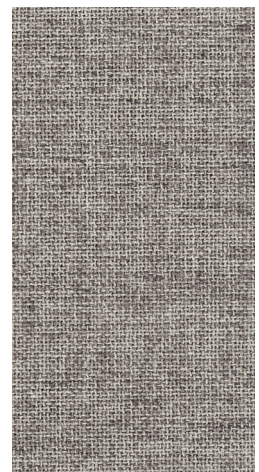
134 MOONLIGHT  
Canvas | PG 26



7730 MOONLIGHT  
Tao | PG 26



7738 MOONLIGHT  
Garbo | PG 25



7733 PLATIN  
Tao | PG 26

## OFF WHITE

---

Die Natur kennt unzählige Nuancen von Weiß. Eine Sammlung unterschiedlicher Qualitäten in Abstufungen von ivory bis hin zu Cremetönen macht diese Farbwelt erlebbar.

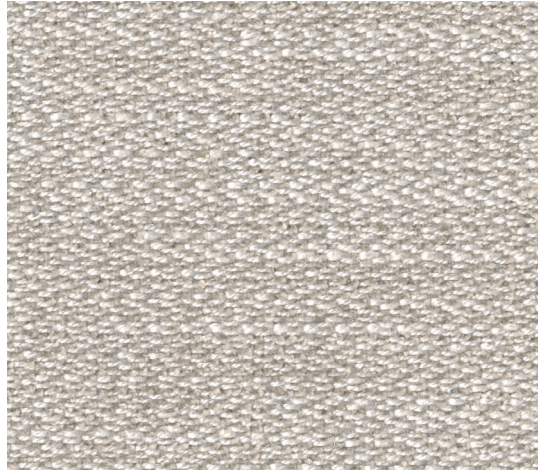
*Nature knows innumerable nuances of white. A collection of different qualities in gradations from ivory to cream tones makes this color world a real experience.*



7892 LINEN  
*Gaia* | PG 25



7860 IVORY  
*Dahna* | PG 28



7865 IVORY  
*Sonora* | PG 27



7685 OFF WHITE  
*Lucia* | PG 26



7615 OFF WHITE  
*Tonga* | PG 25



7764 MELANGE  
*Glint* | PG 26



## PEARL

---

Schätze der Natur: Interpretationen natürlicher Kostbarkeiten in sanften Ecu- und Beigetönen. Von seidig schimmernd bis samt matt.  
*Treasures of nature: interpretations of natural bijoux in soft ecru and beige tones. From silky shimmery to velvety matt.*



7855 SAHARA  
*Togba | PG 25*



7737 PEARL  
*Garbo | PG 25*



7620 MINERAL  
*Tonga | PG 25*



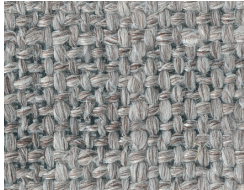
7621 CHALK  
*Tonga | PG 25*

## SHADOW

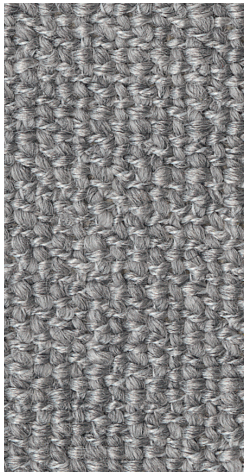
---

Im Spiel des Lichts: Hell und Dunkel scheinen in einen geheimen Dialog zu treten. Aus Licht wird Schatten, aus Schatten wird Licht. Die Elemente fügen sich zu einem harmonischen Ganzen.

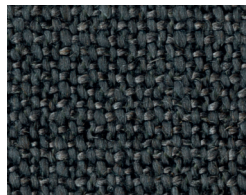
*Play of light: light and darkness seem to engage in a secret dialogue. Light becomes shadow, shadow becomes light. The elements form a harmonious whole.*



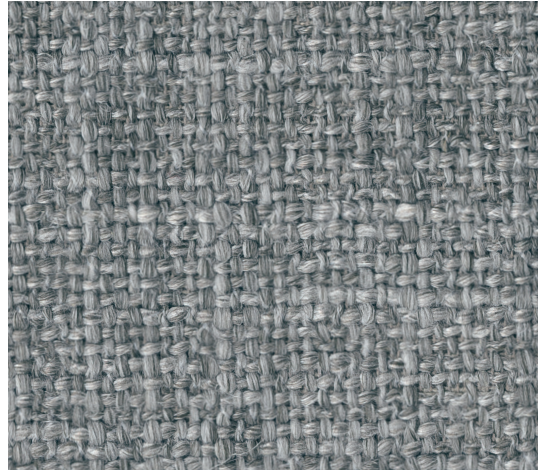
7762 ASH  
*Glint* | PG 26



7618 SHADOW  
*Tonga* | PG 25



7748 SLATE  
*Bora* | PG 26



7760 STEEL  
*Glint* | PG 26



7752 SHADOW  
*Puro* | PG 28



7761 SHADOW  
*Glint* | PG 26



7763 SILVER  
*Glint* | PG 26

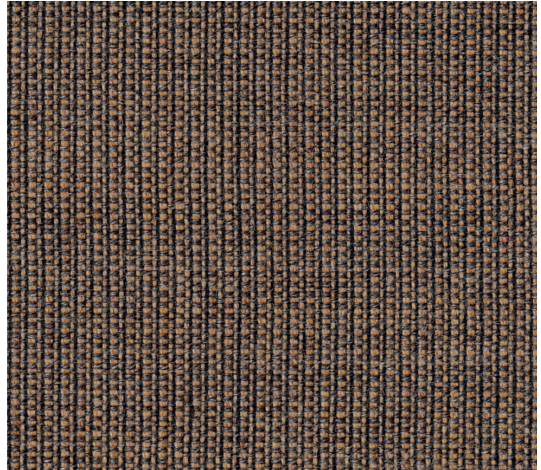


## TIMBER

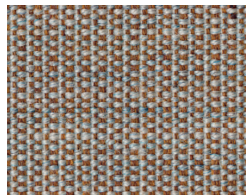
---

Die Lebendigkeit von Holz übersetzt in wertige natürliche Stoffe. Strukturierte Muster sorgen für eindrucksvolle Effekte, mal auffällig und prägnant, mal zurückhaltend und subtil.

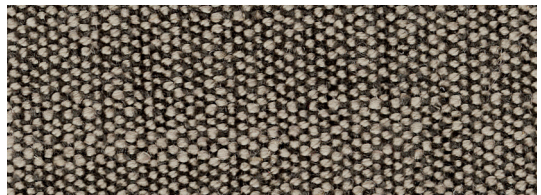
*The liveliness of wood translates into valuable natural substances. Structured patterns create impressive effects, sometimes striking and concise, sometimes restrained and subtle.*



264 TIMBER  
Canvas | PG 26



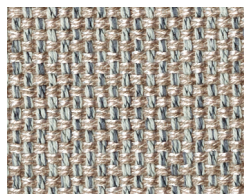
244 SISAL  
Canvas | PG 26



7735 TIMBER  
Garbo | PG 25



7746 LINEN  
Bora | PG 26



7740 TIMBER  
Loft | PG 25

## DIVINA 3 & DIVINA MELANGE 2

Klar, architektonisch, in starken Farben: Divina. Der Wollfilz aus 100% Schurwolle schenkt Interieurs eine lebendige Ausstrahlung.

*Clear, architectural, in strong colors: Divina. This felt, made of 100% new wool, gives interiors a lively appearance.*

Material / Material 100% Schurwolle / Pure new wool  
 Stoffart Flachgewebe, Wollfilz  
 Fabric type Flat woven fabric, woolfelt  
 Scheuertouren 45.000 Martindale  
 Martindale cycles

Lichtechtheit  
 Fastness to light

5-7 (ISO 1-8)

Besonderheiten  
 Characteristics

Brandschutznorm nach BS 5852 source 0+1 und EN 1021 Teil 2 erfüllt.  
 Conforms to fire protection standard BS 5852 source 0+1 and EN 1021 part 2.

Pflegehinweise  
 Care cleaning



Preisgruppe / Price group 26



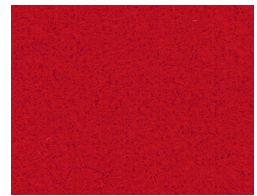
106 WOOL



426 PAPAYA



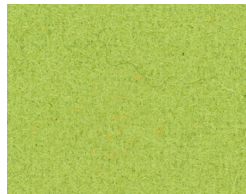
542 ORANGE



623 TOMATO



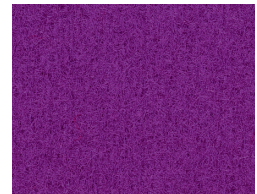
224 MUSCHEL



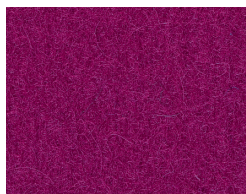
936 GREEN APPLE



922 GREEN



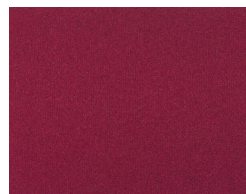
666 VIOLET



662 FUCHSIA



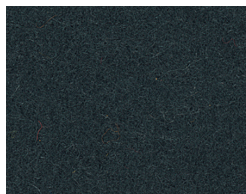
584 HAGEBUTTE



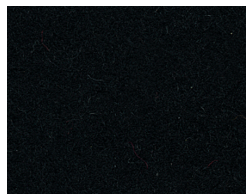
671 BROMBEER



384 TORF



181 SCHWARZ-OLIV



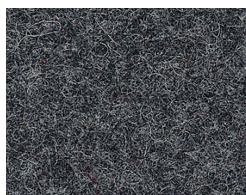
191 SCHWARZ



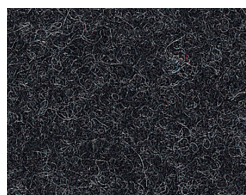
260 CAPPUCCINO



120 HELLGRAU



170 MITTELGRAU



180 DUNKELGRAU



