

WALTER KNOLL



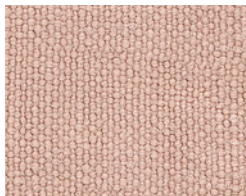
STOFFE
Fabrics

NATURAL ELEGANCE

AFRICA I

Die Farben Afrikas: Das Rot der Erde im Nationalpark in Kenia, die Farben der Gewürze auf dem Basar in Marrakesch, das Blütenmeer im gelben Sand der Wüste – Africa I spielt mit den leuchtenden Farben des Kontinents.

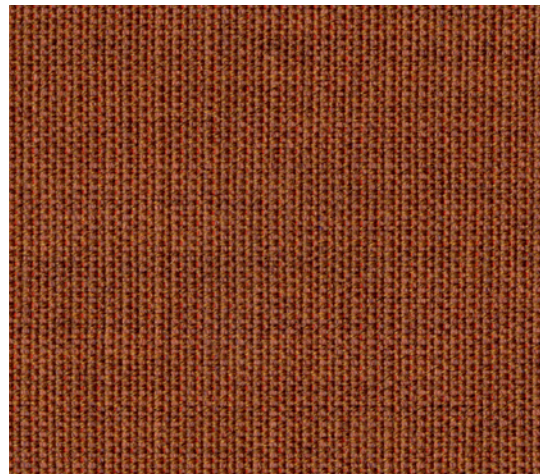
The colors of Africa: the red of planet Earth in the national park of Kenya, the colors of the spices on the bazaar in Marrakech, the sea of flowers in the yellow sand of the desert – Africa I plays with the bright colors of the continent.



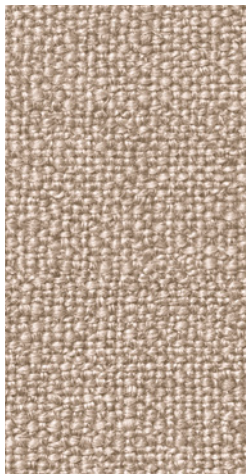
7896 BLUSH ROSE
Lino | PG 28



7895 CINNAMON
Lino | PG 28



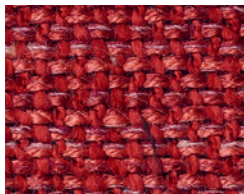
454 SAFFRON
Canvas | PG 26



7889 CHAMPAGNE
Gaia | PG 25



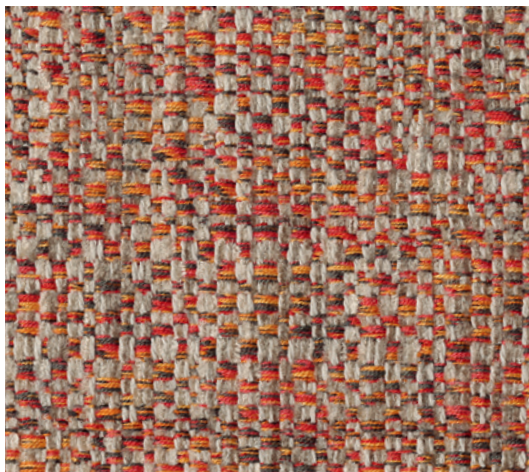
512 PUMPKIN
Harald | PG 32



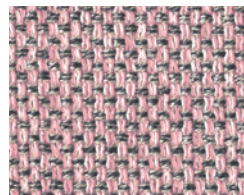
7686 TOMATO
Lucia | PG 26



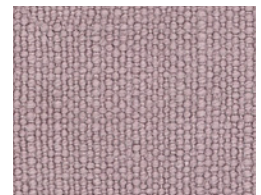
612 ROSE
Harald | PG 32



7690 CARNELIAN
Kimali | PG 27



7744 ROSE QUARTZ
Loft | PG 25



7899 MAGNOLIA
Lino | PG 28



7882 ROSE
Savannah | PG 28

AFRICA II

Blühende Wüsten, Oasen und fruchtbares Land – das Leben zwischen Wüste und Wasser war Inspiration für die Farbwelt Africa II. Brillante Gelb- und Blautöne sorgen für strahlende Akzente.

Blossoming deserts, oases and fertile land – life between desert and water was the inspiration for the color world Africa II. Brilliant yellow and blue tones provide radiant accents.



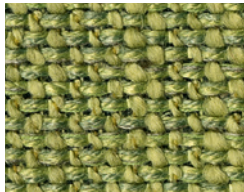
7694 CORN
Lucia | PG 26



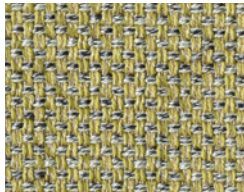
443 AMBER
Harald | PG 32



823 JADE
Harald | PG 32



7689 LIME
Lucia | PG 26



7743 KIWI
Loft | PG 25



7688 TURQUOISE
Lucia | PG 26



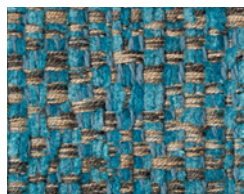
7692 BLUEWASH
Kimali | PG 27



7742 AZURE
Loft | PG 25



7886 TOURMALINE
Gaia | PG 28



7693 AQUA
Kimali | PG 27



7897 DENIM
Lino | PG 28

ATACAMA

Die felsigen Formationen der Steinwüste: Atacama spielt mit Texturen, Haptik und Farben in edlen Braun- und Beigetönen.
The rocky formations of the stone desert: Atacama plays with textures, haptics and colors in noble brown and beige tones.



7835 CHAMPAGNE
Lumi | PG 27



7698 CINNAMON
Lucia | PG 26



7623 SAHARA
Tonga | PG 25



7751 MELANGE
Puro | PG 28



7841 SAND
Doux | PG 30



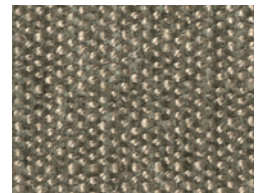
7622 AMBER
Tonga | PG 25



7695 NUTMEG
Lucia | PG 26



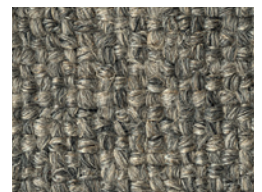
7759 MINERAL
Puro | PG 28



7845 ALMOND
Garbo | PG 25



7831 MACCHIATO
Bogar | PG 40



7753 SISAL
Puro | PG 28

CHESS

Subtile Schattierungen in dunklen Grau- bis Blautönen sowie Schwarz-Weiß-Strukturen gestalten die Farbwelt Chess. Intensiv und ausdrucksstark mit großer Tiefe.

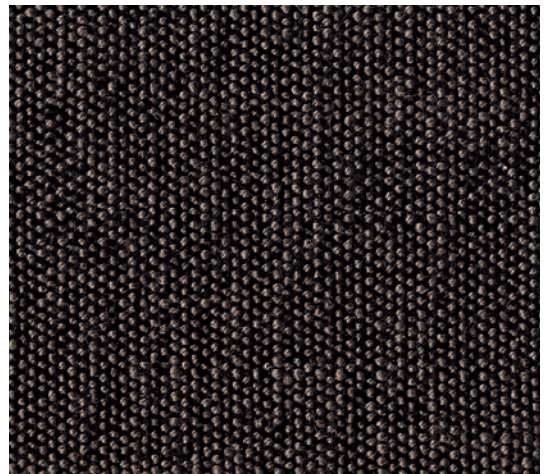
Subtle nuances in dark grey and blue shades as well as black and white structures create the color world Chess. Intense and expressive with great depth.



7758 CHESS
Weave | PG 28



7876 STONE
Oban | PG 32



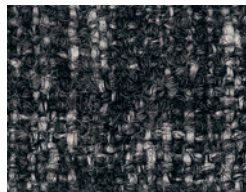
7736 CHESS
Garbo | PG 25



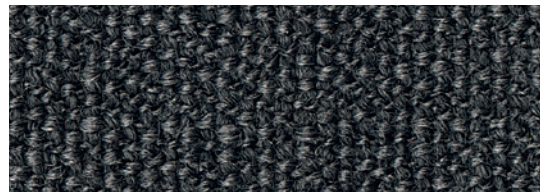
792 OCEAN
Harald | PG 32



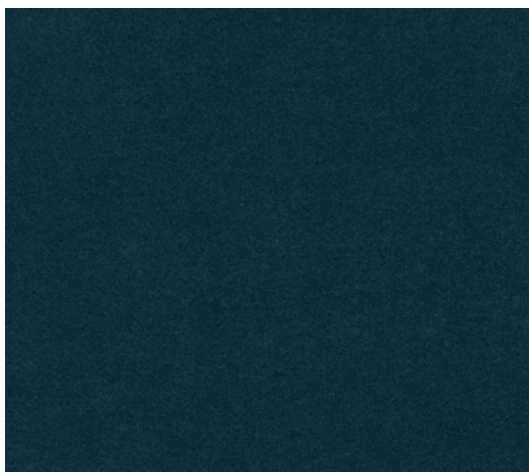
7891 PLATIN
Gaia | PG 25



7877 ROCK
Oban | PG 32



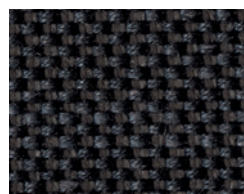
7617 CHESS
Tonga | PG 25



182 DARK JADE
Harald | PG 32



7672 CHESS
Duala | PG 27



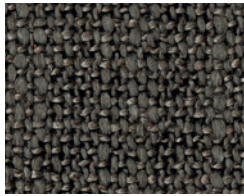
7631 CHESS
Canto | PG 23

CHOCOLATE

Eine Melange verschiedener warmer Brauntöne – ergänzt durch dunkle Rotnuancen. Eine Harmonie der Farben, ruhig und sinnlich.
A mixture of different warm brown tones complemented by dark red nuances. A harmony of colors, calm and sensual.



7878 PEAT
Oban | PG 32



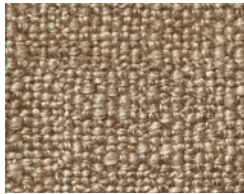
7747 FANGO
Bora | PG 26



7881 CARLINE
Savannah | PG 28



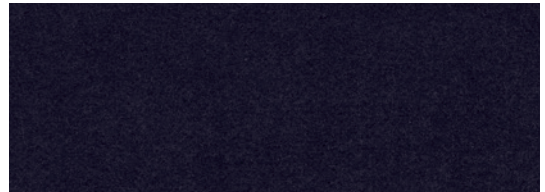
7734 CHOCOLATE
Tao | PG 26



7888 QUARTZ
Gaia | PG 25



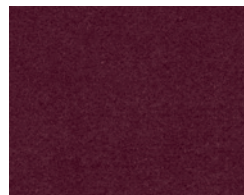
7709 TIMBER
Lino | PG 28



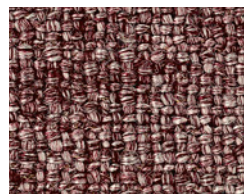
692 AUBERGINE
Harald | PG 32



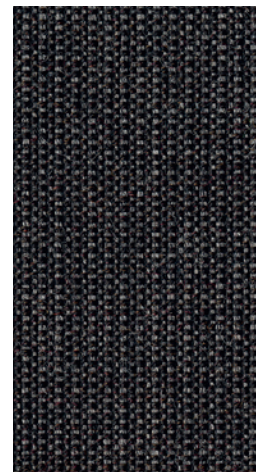
7850 TOBACCO
Togba | PG 25



582 RED GRAPE
Harald | PG 32



7887 AMETHYST
Gaia | PG 25

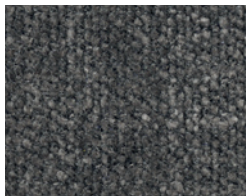


174 CHOCOLATE
Canvas | PG 26

ICELAND

Die faszinierende Vulkanlandschaft Islands ist das Thema dieser Farbwelt. Ausgewählte Materialien in feinen Tönen wie granite, ash und basalt evozieren Erinnerungen an die bizarre Schönheit von Lavagesteins- und Gletscherlandschaften.

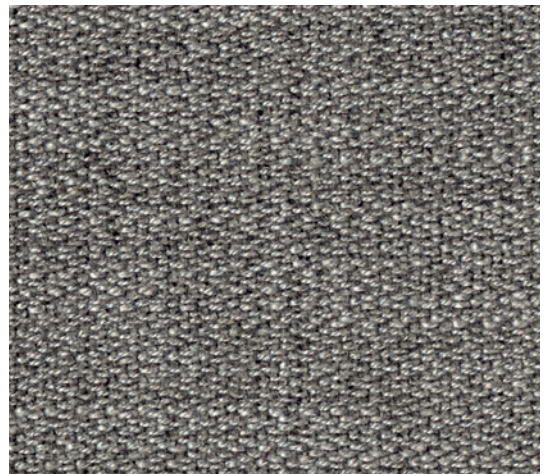
The fascinating volcanic landscape of Iceland is the theme of this color world. Selected materials in fine tones such as granite, ash and basalt evoke memories of the peculiar beauty of lava rock and glacier landscapes.



7840 GRANITE
Doux | PG 30



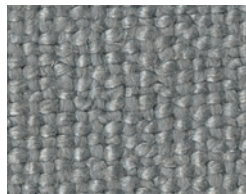
7890 SILVER
Gaia | PG 25



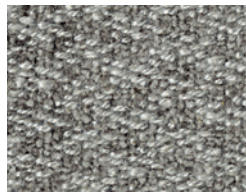
7866 SILVER
Sonora | PG 27



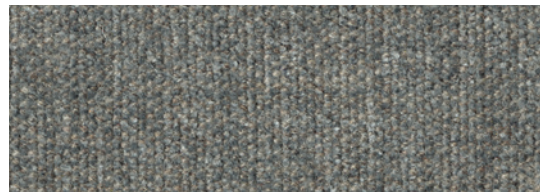
133 SILVER
Harald | PG 32



7754 SILVER
Puro | PG 28



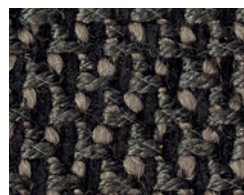
7861 SILVER
Dahna | PG 28



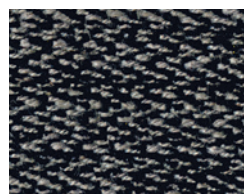
7842 MINERAL
Doux | PG 30



7880 GLYCINE
Savannah | PG 28



7830 NIGHTSHADE
Bogar | PG 40

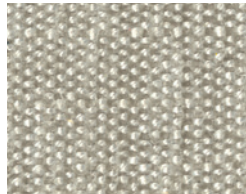


7869 BASALT
Sonora | PG 27

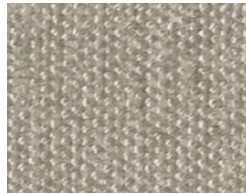
LIMESTONE

Eine Interpretation von Strukturen in sanften, von Kalkstein inspirierten Beige- und Grautönen. Stoffe unterschiedlicher Haptik, in verschiedenen Schattierungen und Nuancen, die ihre kultivierte Natürlichkeit und sensible Struktur zeigen.

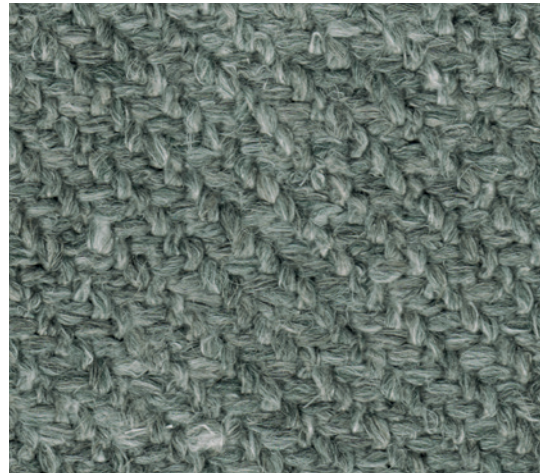
An interpretation of structures in soft beige and grey tones inspired by limestone. Fabrics with different haptics, different shades and nuances that show their cultivated naturalness and sensitive structure.



7846 SHELL
Garbo | PG 25



7847 CASHMERE
Garbo | PG 25



7884 JADE
Savannah | PG 28



7832 PLATINUM
Bogar | PG 40



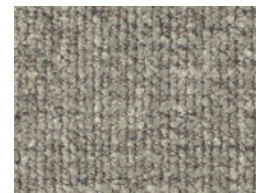
7883 PLATINUM
Savannah | PG 28



7901 SILVER
Grace | PG 40



7843 PEBBLE
Doux | PG 30



7844 GREIGE
Doux | PG 30



143 SMOKY QUARTZ
Harald | PG 32

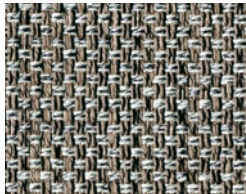


7750 CREAM
Puro | PG 28

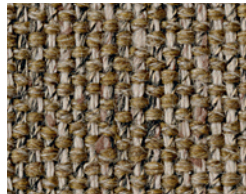
MINERAL

Die Farben der Erde: Im Spiel feiner Farbschattierungen von Grau bis hin zu Blau nuances entfaltet diese Farbwelt ihre besondere Wirkung. So facettenreich wie die Natur.

The colors of planet Earth: this color world is at its best thanks to the interplay of fine color shades between grey and blue. As multifaceted as nature.



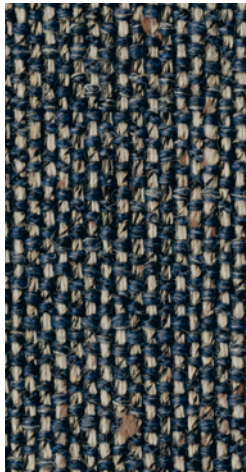
7741 BARK
Loft | PG 25



7851 GOLDEN SAND
Togba | PG 25



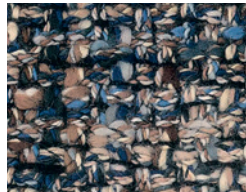
242 MINERAL
Harald | PG 32



7852 BLUE BRONZE
Togba | PG 25



7681 MINERAL
Lucia | PG 26



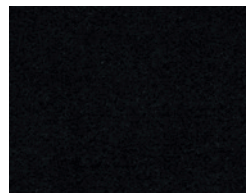
7872 TANZANITE
Sorel | PG 30



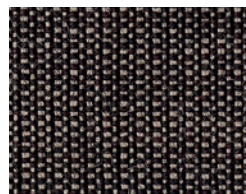
7853 LAVA
Togba | PG 25



7680 MOONLIGHT
Lucia | PG 26



192 BLACK
Harald | PG 32



154 MINERAL
Canvas | PG 26

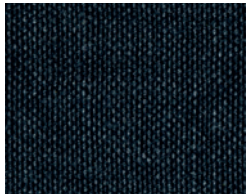


7854 PEBBLE
Togba | PG 25

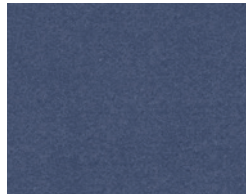
MOONLIGHT

Wie magisch angezogen vom Licht des Mondes, spielen diese Stoffe mit Farben von coal bis silver. Schimmernd und leicht, Sternenstaub fürs Interieur.

Magically attracted to moonlight, these fabrics play with colors from coal to silver. Full of light and shimmering, stardust for the interior.



7714 COAL
Lino | PG 28



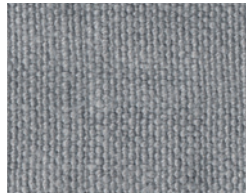
652 BLUE GREY
Harald | PG 32



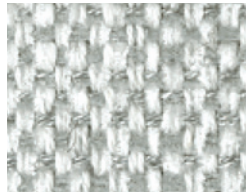
7732 SILVER
Tao | PG 26



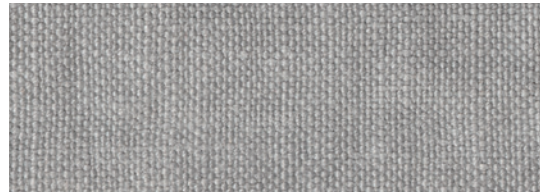
7823 MOONLIGHT
Carré | PG 27



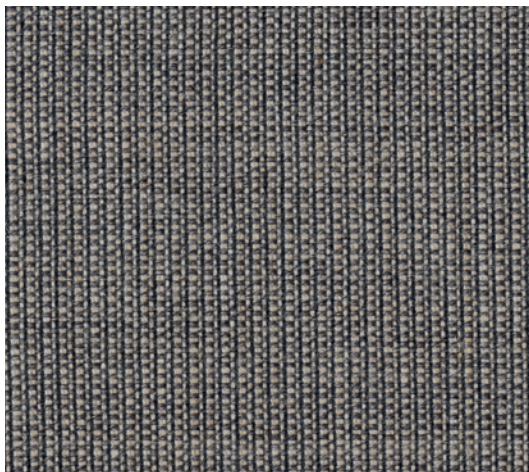
7708 MOONLIGHT
Lino | PG 28



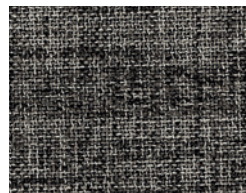
7657 SILVER
Carrara | PG 25



7707 SHADOW
Lino | PG 28



134 MOONLIGHT
Canvas | PG 26



7730 MOONLIGHT
Tao | PG 26



7738 MOONLIGHT
Garbo | PG 25

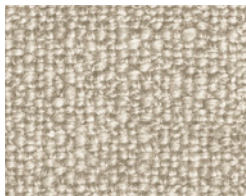


7733 PLATIN
Tao | PG 26

OFF WHITE

Die Natur kennt unzählige Nuancen von Weiß. Eine Sammlung unterschiedlicher Qualitäten in Abstufungen von ivory bis hin zu Cremetönen macht diese Farbwelt erlebbar.

Nature knows innumerable nuances of white. A collection of different qualities in gradations from ivory to cream tones makes this color world a real experience.



7892 LINEN
Gaia | PG 25



7860 IVORY
Dahna | PG 28



7865 IVORY
Sonora | PG 27



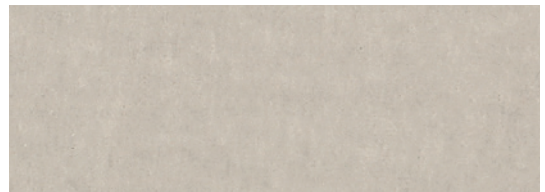
7685 OFF WHITE
Lucia | PG 26



7674 OFF WHITE
Duala | PG 27



7615 OFF WHITE
Tonga | PG 25



212 OFF WHITE
Harald | PG 32



7705 OFF WHITE
Lino | PG 28



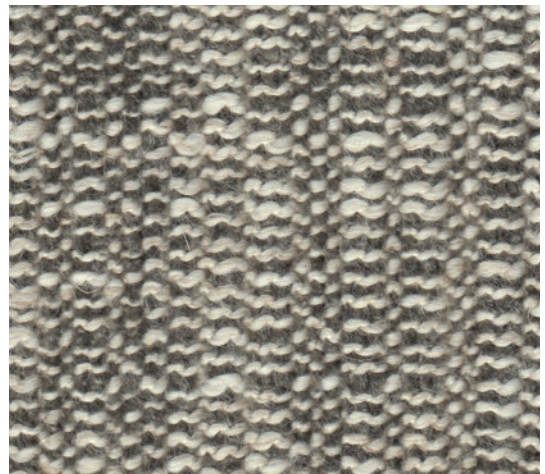
7764 MELANGE
Glint | PG 26

PEARL

Schätze der Natur: Interpretationen natürlicher Kostbarkeiten in sanften Ecu- und Beigetönen. Von seidig schimmernd bis samt matt.
Treasures of nature: interpretations of natural bijoux in soft ecru and beige tones. From silky shimmery to velvety matt.



7757 PEARL
Weave | PG 28



7902 STEEL
Grace | PG 40



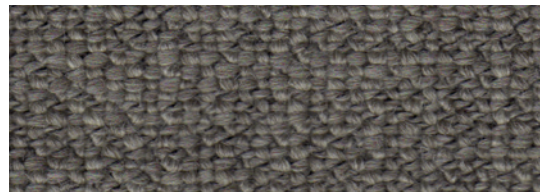
7900 GOLDEN SAND
Grace | PG 40



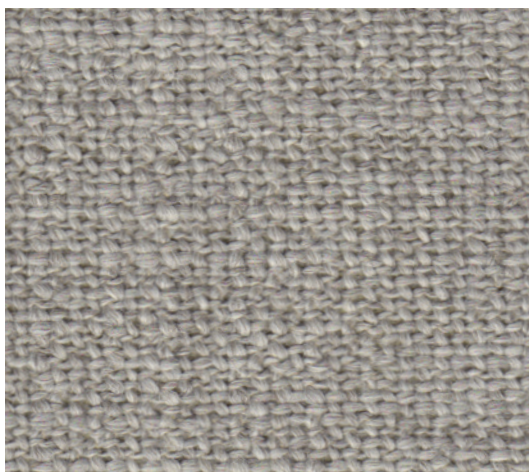
7737 PEARL
Garbo | PG 25



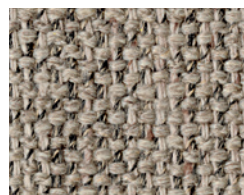
7670 PEARL
Duala | PG 27



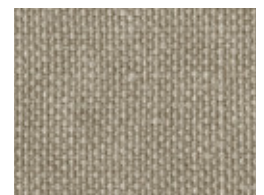
7620 MINERAL
Tonga | PG 25



7621 CHALK
Tonga | PG 25



7855 SAHARA
Togba | PG 25



7706 PEARL
Lino | PG 28

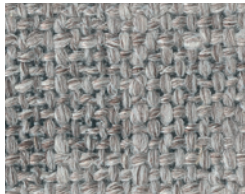


7656 PEARL
Carrara | PG 25

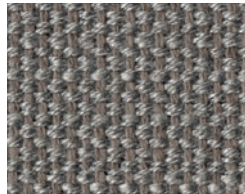
SHADOW

Im Spiel des Lichts: Hell und Dunkel scheinen in einen geheimen Dialog zu treten. Aus Licht wird Schatten, aus Schatten wird Licht. Die Elemente fügen sich zu einem harmonischen Ganzen.

Play of light: light and darkness seem to engage in a secret dialogue. Light becomes shadow, shadow becomes light. The elements form a harmonious whole.



7762 ASH
Glint | PG 26



7696 SHADOW
Kerala | PG 25



7760 STEEL
Glint | PG 26



7618 SHADOW
Tonga | PG 25



7632 SHADOW
Canto | PG 23



7748 SLATE
Bora | PG 26



7756 SILVER
Weave | PG 28



7752 SHADOW
Puro | PG 28



7761 SHADOW
Glint | PG 26



7755 SHADOW
Weave | PG 28



7763 SILVER
Glint | PG 26

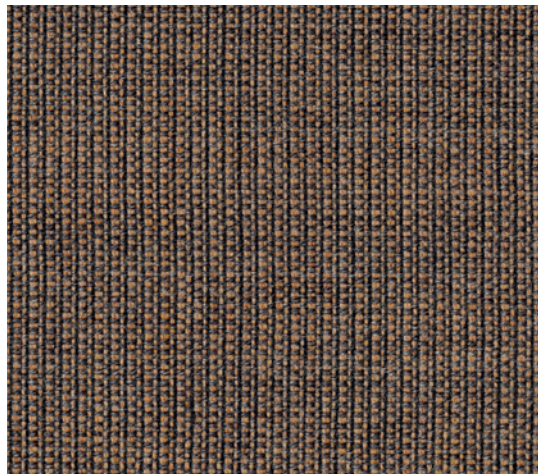
TIMBER

Die Lebendigkeit von Holz übersetzt in wertige natürliche Stoffe. Strukturierte Muster sorgen für eindrucksvolle Effekte, mal auffällig und prägnant, mal zurückhaltend und subtil.

The liveliness of wood translates into valuable natural substances. Structured patterns create impressive effects, sometimes striking and concise, sometimes restrained and subtle.



7873 TOPAZ
Sorel | PG 30



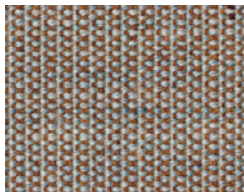
264 TIMBER
Canvas | PG 26



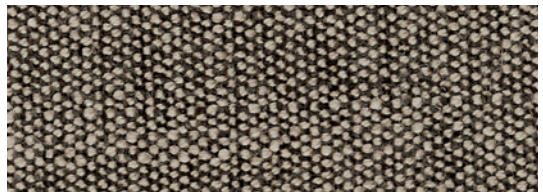
7875 PEBBLE
Oban | PG 32



7871 SMOKE QUARTZ
Sorel | PG 30



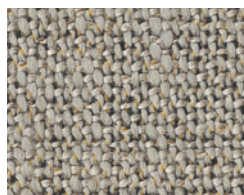
244 SISAL
Canvas | PG 26



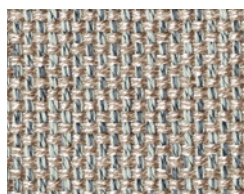
7735 TIMBER
Garbo | PG 25



7870 TOURMALINE
Sorel | PG 30



7746 LINEN
Bora | PG 26



7740 TIMBER
Loft | PG 25

DIVINA 3 & DIVINA MELANGE 2

Klar, architektonisch, in starken Farben: Divina. Der Wollfilz aus 100% Schurwolle schenkt Interieurs eine lebendige Ausstrahlung.
Clear, architectural, in strong colors: Divina. This felt, made of 100% new wool, gives interiors a lively appearance.

Material / Material 100% Schurwolle / Pure new wool
 Stoffart Flachgewebe, Wollfilz
 Fabric type Flat woven fabric, woolfelt
 Scheuertouren 45.000
 Martindale cycles

Lichtechtheit
Fastness to light
 Besonderheiten
Characteristics

5–7 (ISO 1–8)

Brandschutznorm nach BS 5852 source 0+1 und EN 1021 Teil 2 erfüllt.
Conforms to fire protection standard BS 5852 source 0+1 and EN 1021 part 2.

Pflegehinweise
Care cleaning



Preisgruppe / Price group 26



106 WOOL



426 PAPAYA



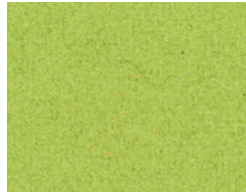
542 ORANGE



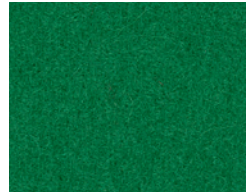
623 TOMATO



224 MUSCHEL



936 GREEN APPLE



922 GREEN



666 VIOLET



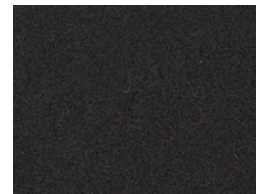
662 FUCHSIA



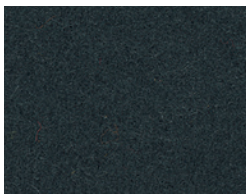
584 HAGEBUTTE



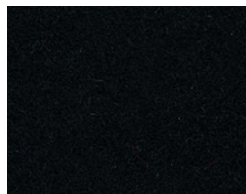
671 BROMBEER



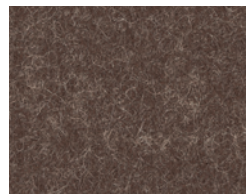
384 TORF



181 SCHWARZ-OLIV



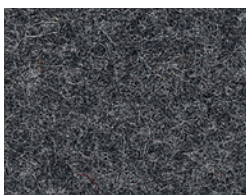
191 SCHWARZ



260 CAPPUCCINO



120 HELLGRAU



170 MITTELGRAU



180 DUNKELGRAU

HARALD 2 & HARALD 3

Samtiger Velours mit beeindruckender farblicher Tiefe: Harald begeistert mit der Weichheit des Materials.

Velvety velour with impressive color depth: Harald inspires with the softness of the material.

Material / Material 100 % Baumwolle / Cotton

Stoffart Velours
Fabric type Velour

Scheuertouren 100.000
Martindale cycles

Lichtechtheit
Fastness to light

Pflegehinweise
Care cleaning

Empfehlung
Recommendations

Preisgruppe / Price group 32

5-6 (ISO 1-8)



Dieser Stoff ist nur für ausgewählte Modelle geeignet.
This fabric is only suitable for selected models.



443 AMBER



823 JADE



512 PUMPKIN



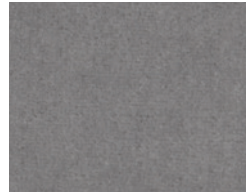
612 ROSE



212 OFF WHITE



123 PEARL



133 SILVER



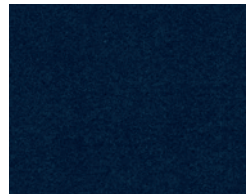
652 BLUE GREY



143 SMOKY QUARTZ



242 MINERAL



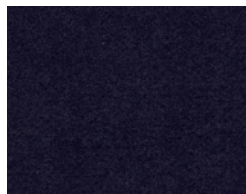
792 OCEAN



182 DARK JADE



582 RED GRAPE



692 AUBERGINE



952 FOREST GREEN



192 BLACK

