

# WALTER KNOLL

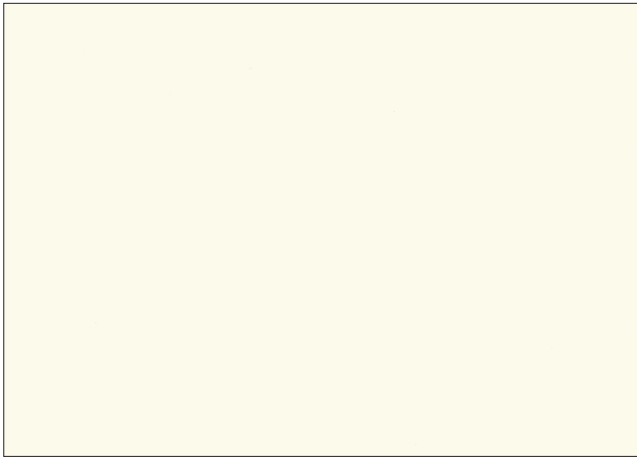


---

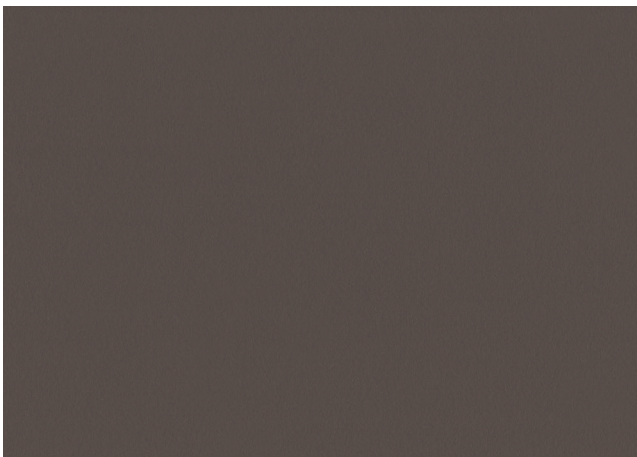
OBERFLÄCHEN OFFICE 2024  
*Surfaces office 2024*

## LACKE & FEINSTRUKTURLACKE / *Paints & Fine-textured paints*

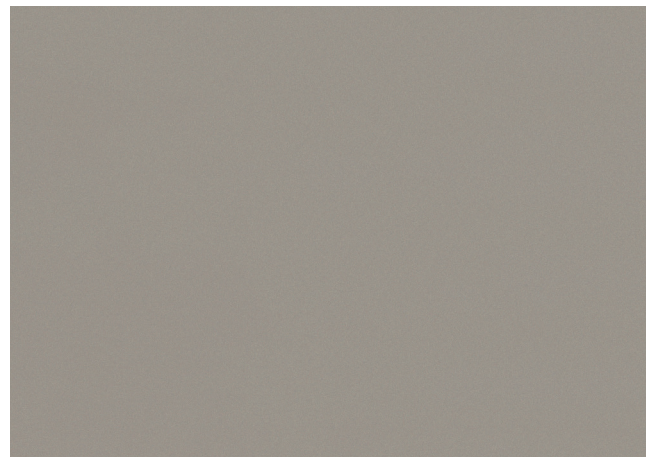
---



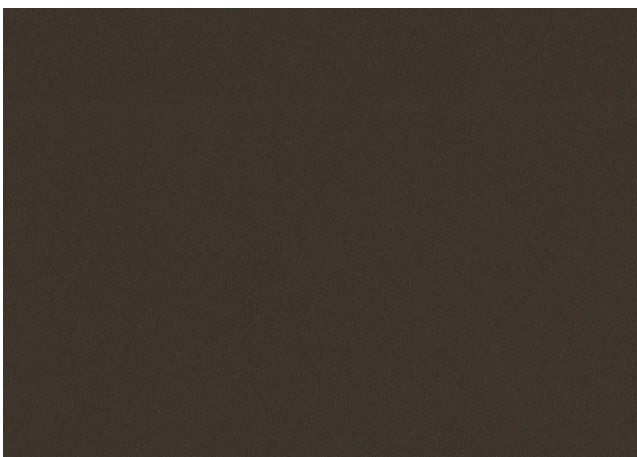
.03 LACK WHITE MATT /  
.03 *Paint white matt*



.101 FEINSTRUKTURLACK MAUVE /  
.101 *Fine-textured paint mauve*



.102 FEINSTRUKTURLACK TAUPE /  
.102 *Fine-textured paint taupe*



.103 FEINSTRUKTURLACK BRONZE /  
.103 *Fine-textured paint bronze*



.104 FEINSTRUKTURLACK MINERAL /  
.104 *Fine-textured paint mineral*

## FEINSTRUKTURLACKE / *Fine-textured paints*

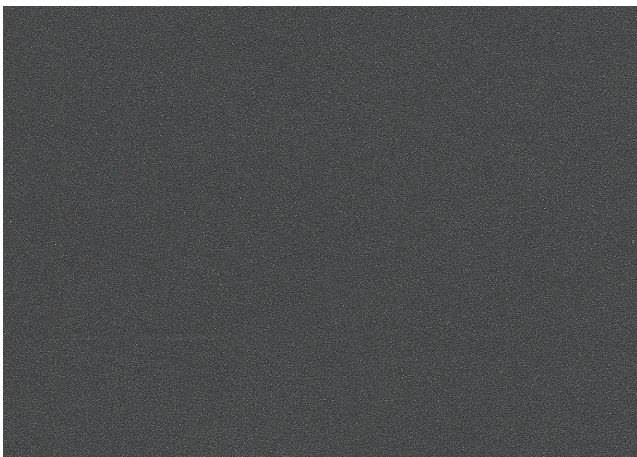
---



.105 FEINSTRUKTURLACK WHITE /  
.105 *Fine-textured paint white*



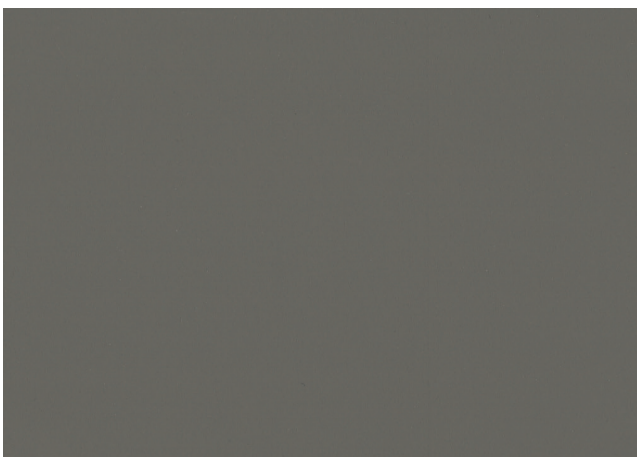
.106 FEINSTRUKTURLACK BLACK /  
.106 *Fine-textured paint black*



.118 FEINSTRUKTURLACK ANTHRACITE /  
.118 *Fine-textured paint anthracite*



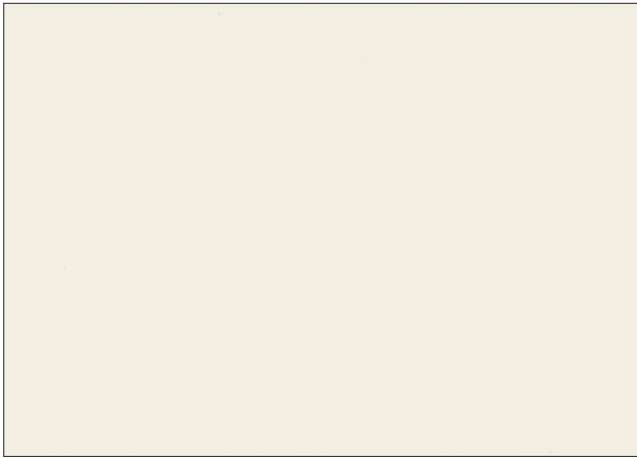
.119 FEINSTRUKTURLACK GREY-ANTHRACITE /  
.119 *Fine-textured paint grey-anthracite*



.121 FEINSTRUKTURLACK GREIGE /  
.121 *Fine-textured paint greige*

## HPL / High Pressure Laminates

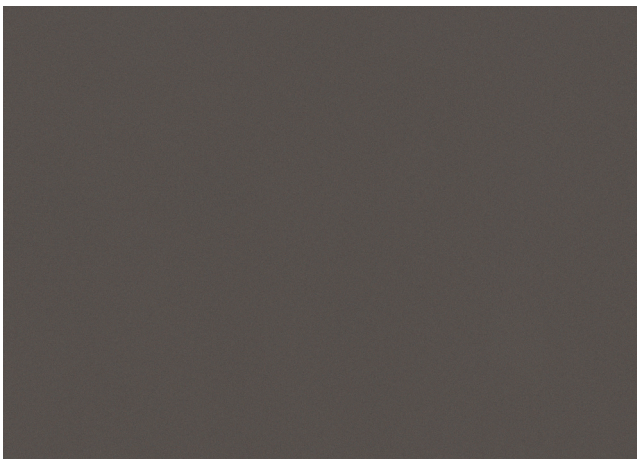
---



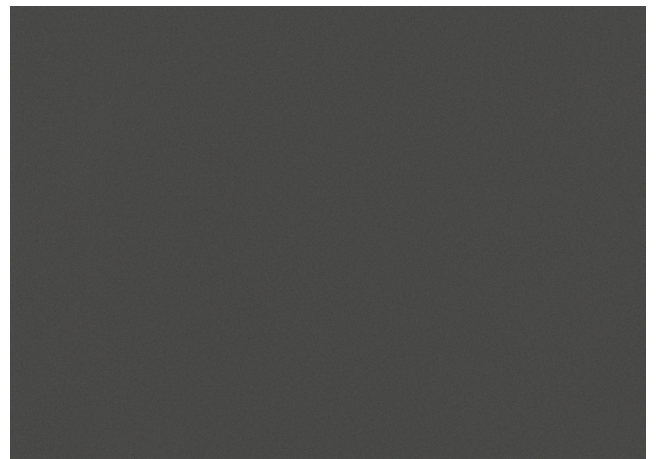
.110sd HPL WHITE



.111sd HPL FANGO



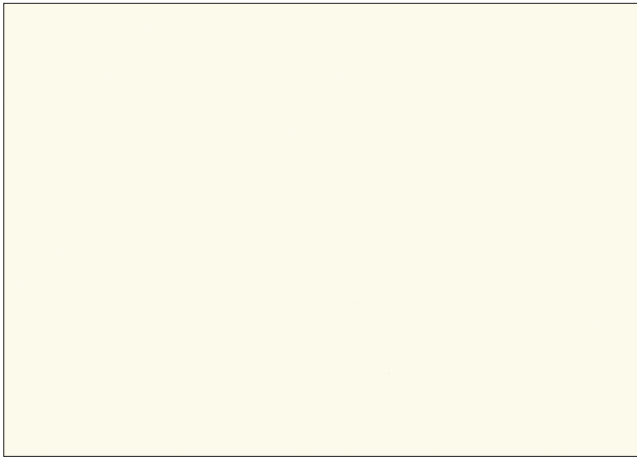
.112sd HPL EARTH



.113sd HPL GRAPHITE

## FENIX®

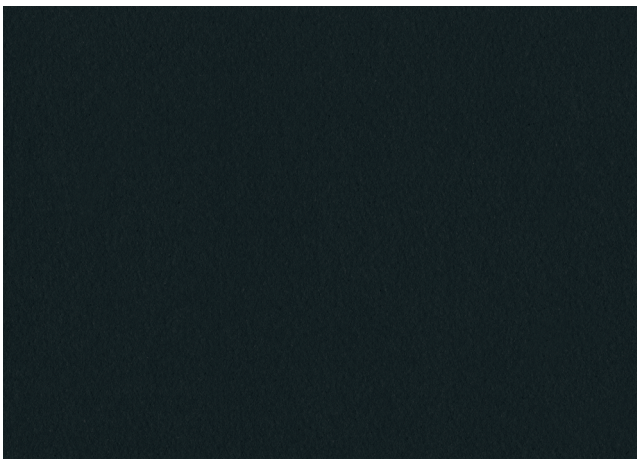
---



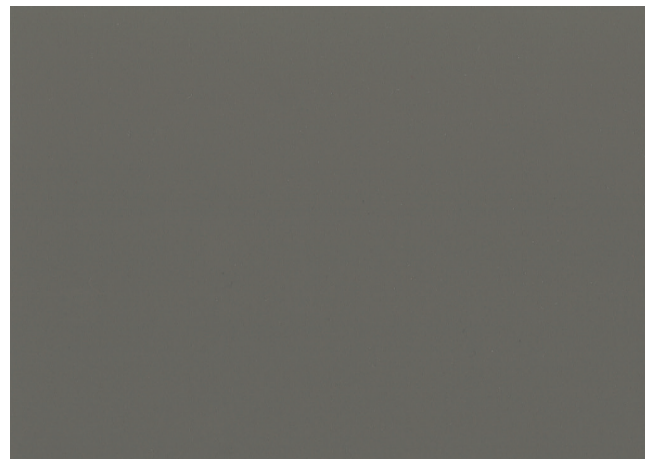
.107 FENIX® WHITE



.108 FENIX® MINERAL



.109 FENIX® BLACK



.122 FENIX® GREIGE

## LINOLEUM / *Linoleum*

---



.70 LINOLEUM BLACK /  
.70 *Linoleum black*



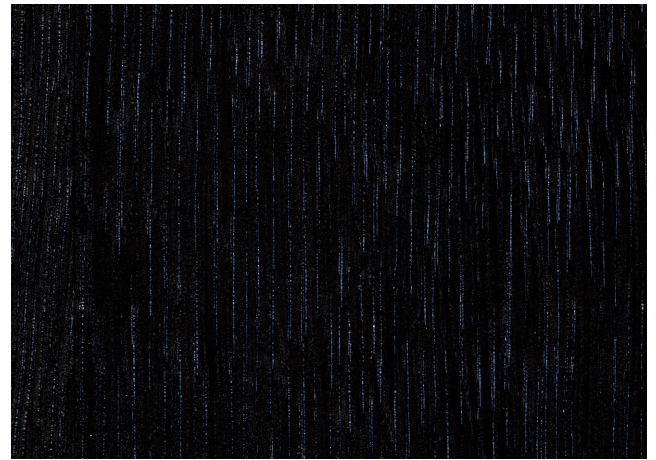
.73 LINOLEUM MAUVE /  
.73 *Linoleum mauve*

## FURNIER, LACKIERT / Veneer, lacquered

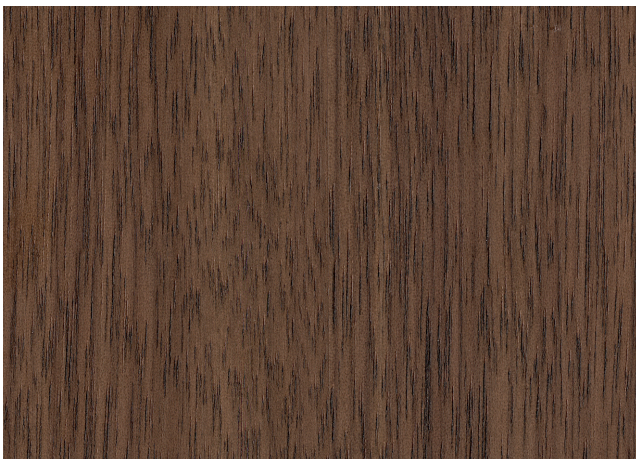
---



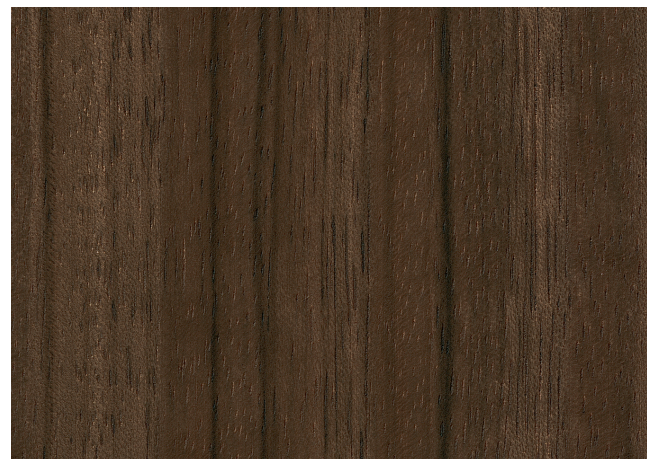
.10VL EICHE WEISS PIGMENTIERT /  
.10vl Oak white pigmented



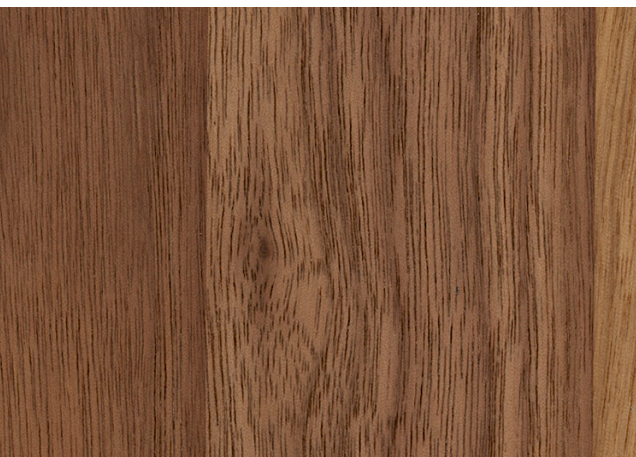
.14VL EICHE GEFLAMMT /  
.14vl Oak burned



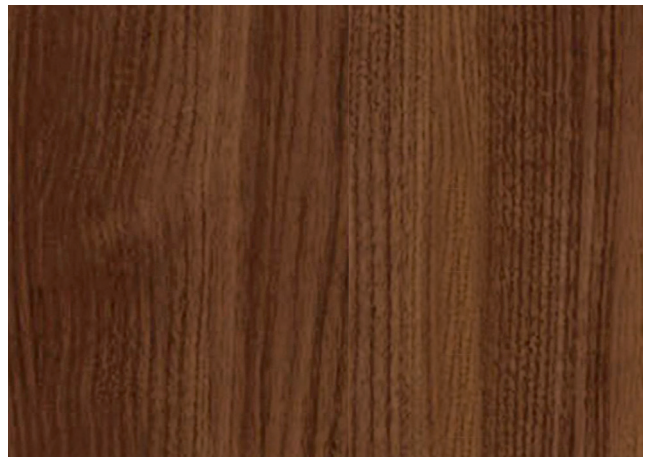
.92VL NUSSBAUM DUNKEL /  
.92vl Nutwood dark



.95VL OZEANISCHER NUSSBAUM /  
.95vl Oceanic nutwood



.99VL NUSSBAUM MIT SPLINTANTEIL /  
.99vl Nutwood with sapwood inclusions



.127VL NUSSBAUM MADURO /  
.127vl Nutwood maduro

## FURNIER, LACKIERT / *Veneer, lacquered*

---



.131VL EICHE TOBACCO /  
*.131vl Oak tobacco*

### WALTER KNOLL FURNIERE

Bei dieser Legeart werden die Furnierblätter gemischt aus unterschiedlichen Furnierpaketen des selben Stammes zusammengesetzt. Die Breiten der Furnierblätter sind unterschiedlich. Es entsteht ein lebendiger Furnier-Aufbau - optisch ähnlich verleimten Massivholzes. Es können kleine Ast-Einschlüsse vorkommen. Eine großformatige Darstellung der Furniere finden Sie auf unserer Homepage.

### WALTER KNOLL VENEERS

*For this method veneers from different packs of the same log are matched in a random sequence and different widths. This produces a lively and natural wood plank effect similar to that of glued solid wood. Veneer may include small knots and gnarls. You can find a large-format representation of the veneers on our homepage.*

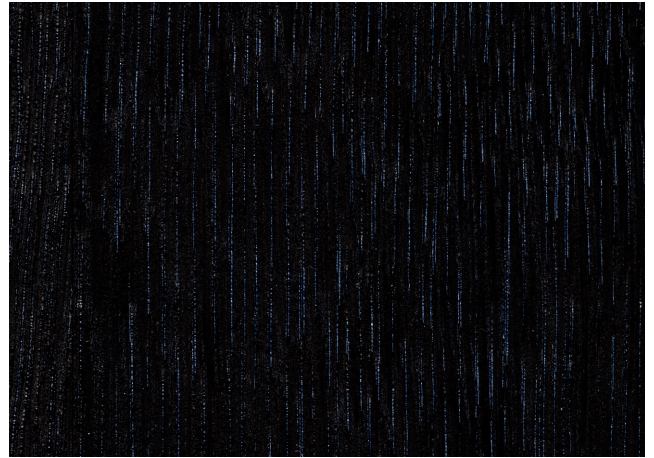


## MASSIVHOLZ / *Solid wood*

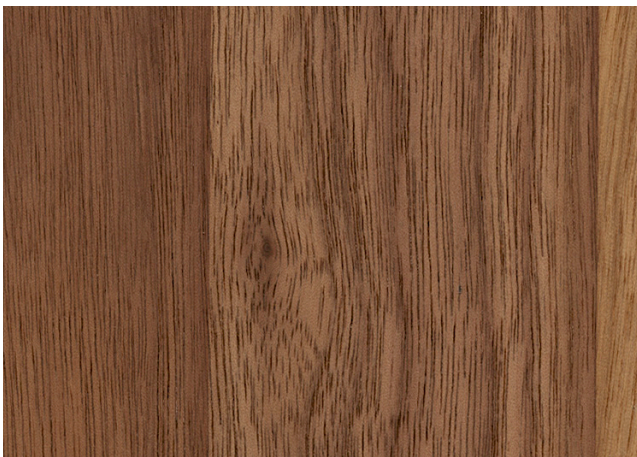
---



.10WO EICHE WEISS PIGMENTIERT, GEÖLT /  
.10wo Oak white pigmented, oiled



.14WO EICHE GEFLAMMT, GEÖLT /  
.14wo Oak burned, oiled



.99WO NUSSBAUM MIT SPLINTANTEIL, GEÖLT /  
.99wo Nutwood with sapwood inclusions, oiled



.131WO EICHE TOBACCO, GEÖLT /  
.131wo Oak tobacco, oiled

## QUARZSTEIN / *Quartz Stone*

---



QUARZSTEIN WEISS /  
*Quartz Stone white*

## GLAS / Glass

---



.31 GLAS TRANSPARENT /  
.31 Glass transparent



.35 GLAS SCHWARZ /  
.35 Glass black



.37 GLAS SCHWARZ GETÖNT /  
.37 Glass black-hued



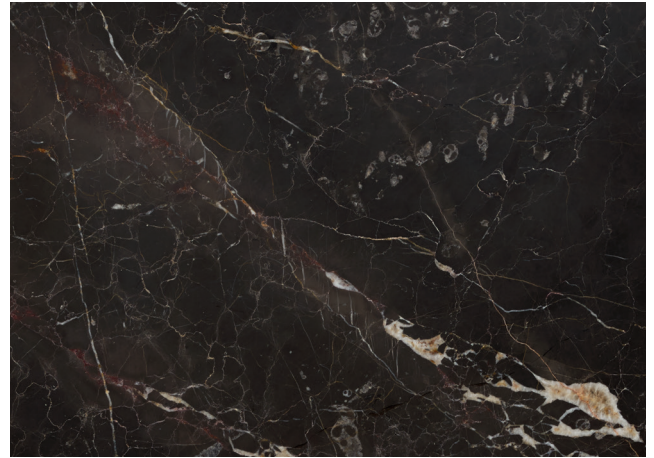
.38 GLAS BRAUN GETÖNT /  
.38 Glass brown-hued

## NATURSTEIN / *Natural Stone*

---



.115 NERO MARQUINA /  
.115 *Nero Marquina*



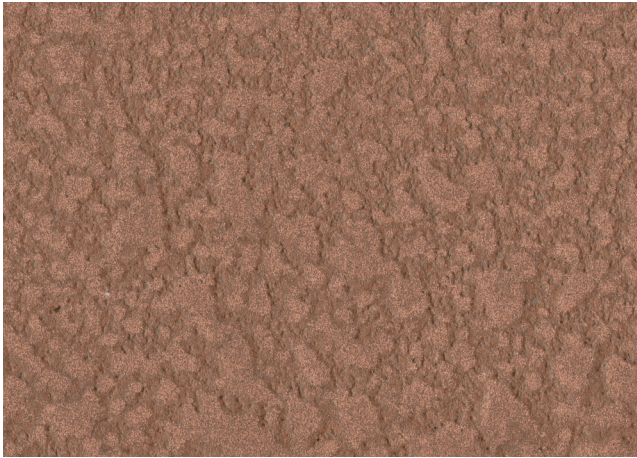
.116 NOIR SAINT LAURENT /  
.116 *Noir Saint Laurent*



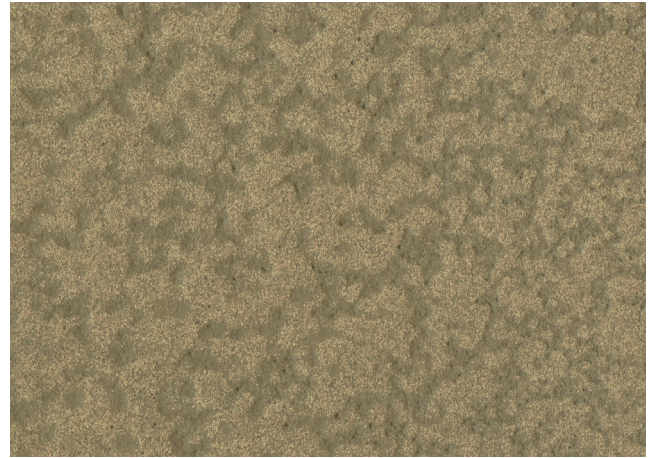
.134 DOVER WHITE /  
.134 *Dover White*

## LEICHTBETON / *Lightweight concrete*

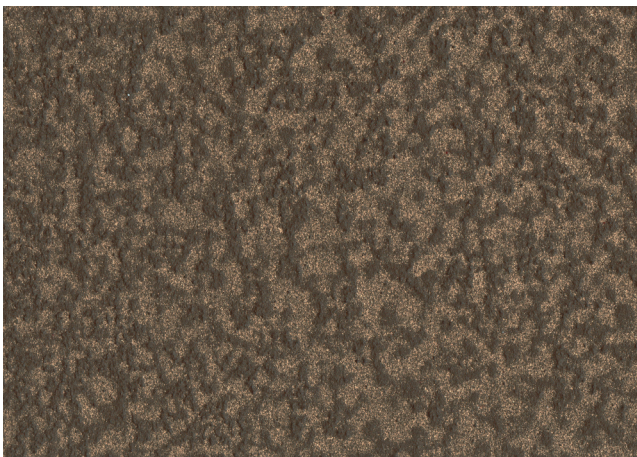
---



.123 OPTIK KUPFER /  
.123 *Copper look alike finish*



.124 OPTIK MESSING /  
.124 *Brass look alike finish*



.125 OPTIK BRONZE /  
.125 *Bronze look alike finish*

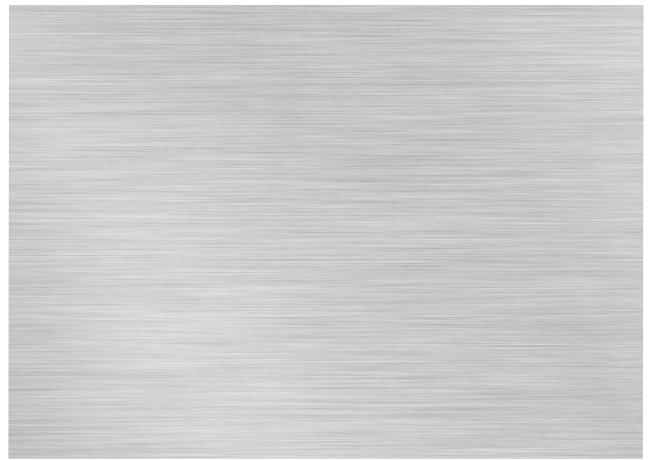
# WALTER KNOLL

## METALL / Metal

---



.IN MESSING VEREDELT /  
*.Brass-plated*



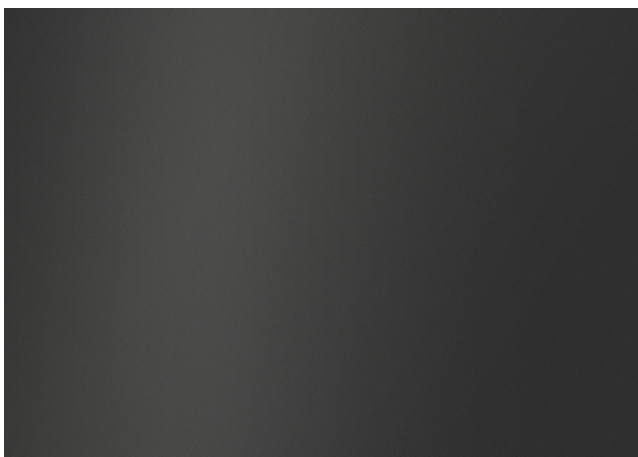
.STRICHMATT /  
*.Matt brushed*



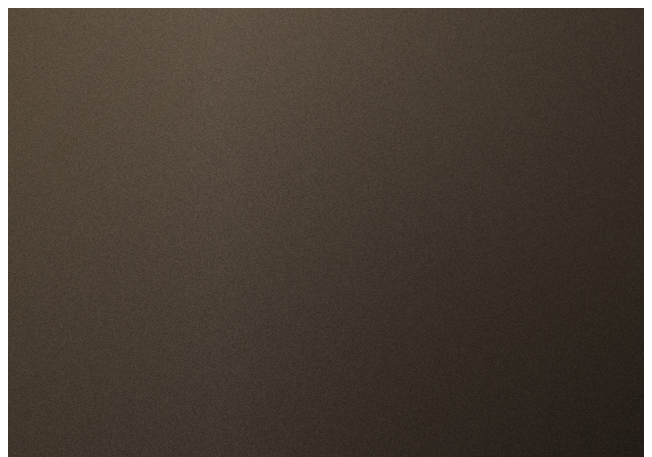
.HOCHGLANZ-VERCHROMT /  
*.Polished chrome*



.SCHWARZ-CHROM /  
*.Black chrome*



.MATT-PULVERBESCHICHTET SCHWARZ /  
*.Powder-coated black matt*



.MATT-PULVERBESCHICHTET BRONZE /  
*.Powder-coated bronze matt*

