

WALTER K.



---

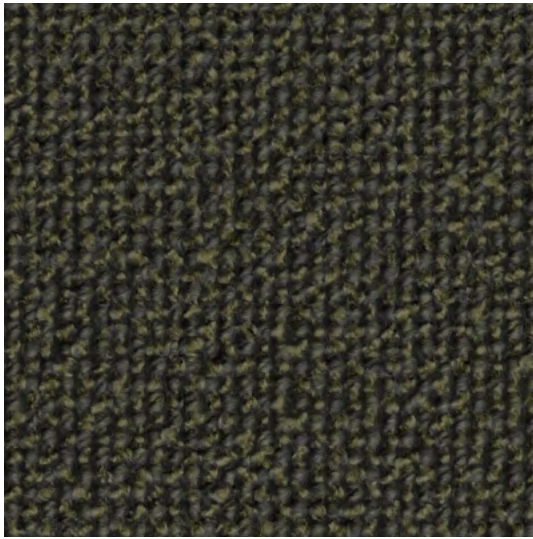
STOFFE 2026/27  
*Fabrics 2026/27*

## INHALT / CONTENT

---

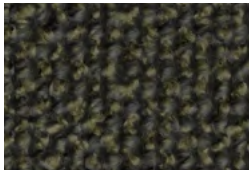
AURENE	Seite/page 3	PURO	Seite/page 13
BOGAR	Seite/page 4	RUBAN	Seite/page 14
DOUX	Seite/page 5	SAFIRE	Seite/page 15
GAIA	Seite/page 6	SELENE	Seite/page 16
GARBO	Seite/page 7	TAO	Seite/page 17
GLINT	Seite/page 8	TAPIS	Seite/page 18
KIMALI	Seite/page 9	TOGBA	Seite/page 19
LOFT	Seite/page 10	TONGA	Seite/page 20
LUCIA	Seite/page 11	NATURAL ELEGANCE FARBWELTEN / NATURAL ELEGANCE COLOR WORLDS	Seite/page 21
NAMIB	Seite/page 12		

# AURENE



7983 MOSS

Material <i>Material</i>	34% Baumwolle/ <i>Cotton</i> 33% Wolle/ <i>Wool</i> 19% Polyacrylnitril/ <i>Polyacrylonitrile</i> 8% Polyamid/ <i>Polyamide</i> 6% Polyester/ <i>Polyester</i>
Stoffart <i>Fabric type</i>	Bouclé <i>Bouclé</i>
Scheuertouren <i>Martindale cycles</i>	90.000
Lichtechtheit <i>Fastness to light</i>	5–7 (ISO 1–8)
Brandschutz <i>Fire protection</i>	BS 5852 Part 1 Ignition Source 0 BS 5852 Part 1 Ignition Source 1 Cal. TB 117-2013 DIN EN 1021 Part 1+2
Pflegehinweise <i>Care cleaning</i>	    
Preisgruppe <i>Price group</i>	40



7983 MOSS  
Natural Elegance Mineral



7982 BELLADONNA  
Natural Elegance Chess

# BOGAR



7832 PLATINUM

Material  
*Material* 31% Viskose/*Viscose*  
26% Baumwolle/*Cotton*  
24% Polyacryl/*Polyacrylic*  
10% Leinen/*Linen*  
8% Wolle/*Wool*  
1% Polyamid/*Polyamide*

Stoffart  
*Fabric type* Flachgewebe  
*Flat woven fabric*

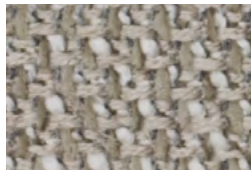
Scheuertouren  
*Martindale cycles* 30.000

Lichtechtheit  
*Fastness to light* 4–5 (ISO 1–8)

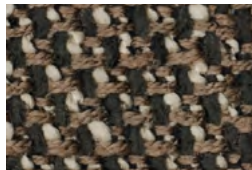
Brandschutz  
*Fire protection* Cal. TB 117-2013

Pflegehinweise  
*Care cleaning*     

Preisgruppe  
*Price group* 40



7832 PLATINUM  
Natural Elegance Limestone



7831 MACCHIATO  
Natural Elegance Atacama





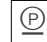


7830 NIGHTSHADE  
Natural Elegance Iceland

# DOUX



7841 SAND

Material <i>Material</i>	35% Wolle/Wool 35% Viskose/Viscose 21% Baumwolle/Cotton 9% Polyamid/Polyamide
Stoffart <i>Fabric type</i>	Chenille Chenille
Scheuertouren <i>Martindale cycles</i>	25.000
Lichtechtheit <i>Fastness to light</i>	4–6 (ISO 1–8)
Brandschutz <i>Fire protection</i>	BS 5852 Part 1 Ignition Source 0 BS 5852 Part 1 Ignition Source 1 Cal. TB 117-2013 DIN EN 1021 Part 1+2
Pflegehinweise <i>Care cleaning</i>	    
Preisgruppe <i>Price group</i>	30



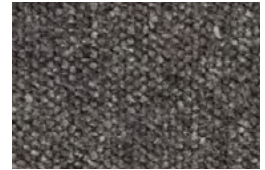
7843 PEBBLE  
Natural Elegance Limestone



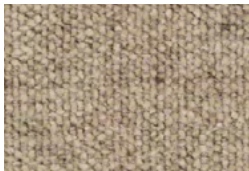
7844 GREIGE  
Natural Elegance Limestone



7842 MINERAL  
Natural Elegance Iceland

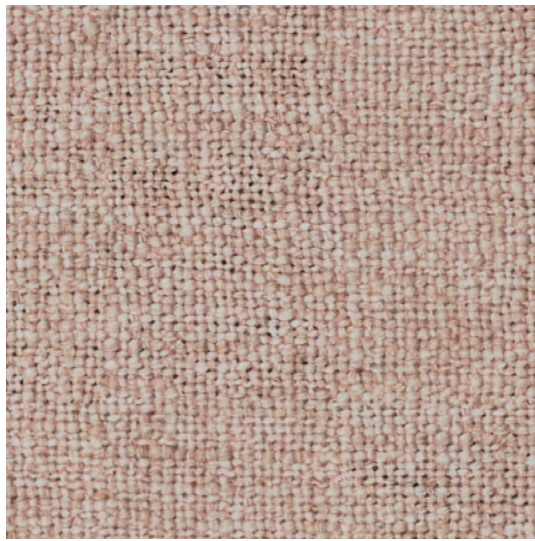


7840 GRANITE  
Natural Elegance Iceland



7841 SAND  
Natural Elegance Atacama

# GAIA



Material  
*Material* 52% Polyacryl/*Polyacrylic*  
40% Leinen/*Linen*  
8% Nylon/*Nylon*

Stoffart  
*Fabric type* Flachgewebe  
*Flat woven fabric*

Scheuertouren  
*Martindale cycles* 20.000

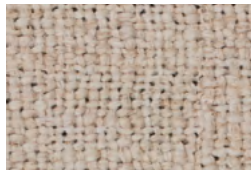
Lichtechtheit  
*Fastness to light* 4 (ISO 1–8)

Brandschutz  
*Fire protection* Cal. TB 117-2013

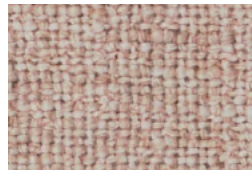
Pflegehinweise  
*Care cleaning*     

Preisgruppe  
*Price group* 25

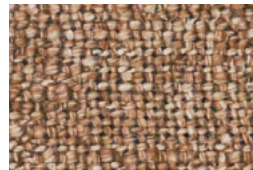
7889 CHAMPAGNE



7892 LINEN  
Natural Elegance Off White



7889 CHAMPAGNE  
Natural Elegance Africa I



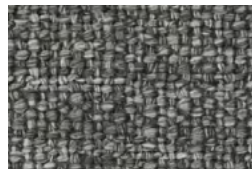
7888 QUARTZ  
Natural Elegance Chocolate



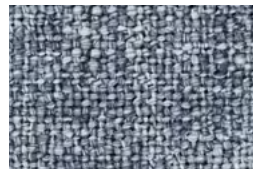
7887 AMETHYST  
Natural Elegance Chocolate



7891 PLATIN  
Natural Elegance Chess



7890 SILVER  
Natural Elegance Iceland

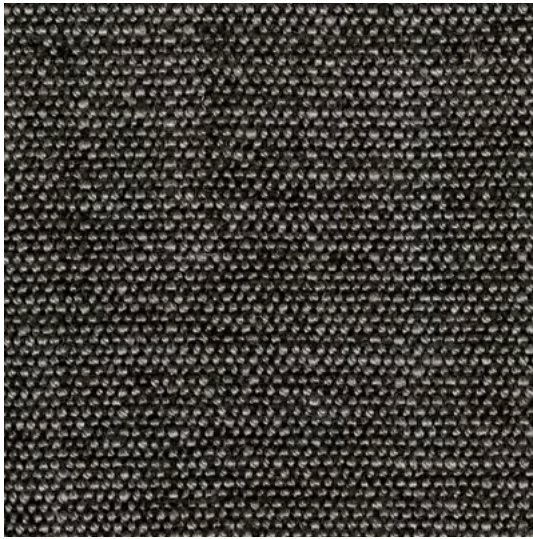


7885 TOPAZ  
Natural Elegance Chess



7886 TOURMALINE  
Natural Elegance Africa II

# GARBO








**Material**  
*Material* 45% Viskose/*Viscose*  
 30% Polyacryl/*Polyacrylic*  
 15% Leinen/*Linen*  
 6% Baumwolle/*Cotton*  
 4% Polyester/*Polyester*

**Stoffart**  
*Fabric type* Chenille  
*Chenille*

**Scheuertouren**  
*Martindale cycles* 45.000

**Lichtechtheit**  
*Fastness to light* 4–5 (ISO 1–8)

**Brandschutz**  
*Fire protection* Cal. TB 117-2013

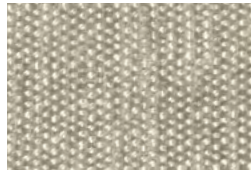
**Pflegehinweise**  
*Care cleaning*






**Preisgruppe**  
*Price group* 25

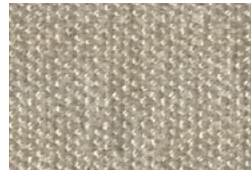
7738 MOONLIGHT



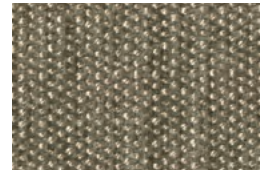
7737 PEARL  
Natural Elegance Pearl



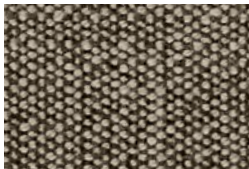
7846 SHELL  
Natural Elegance Limestone



7847 CASHMERE  
Natural Elegance Limestone



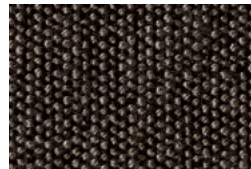
7845 ALMOND  
Natural Elegance Atacama



7735 TIMBER  
Natural Elegance Timber



7738 MOONLIGHT  
Natural Elegance Moonlight








7736 CHESS  
Natural Elegance Chess

# GLINT



7778 STONE

Material <i>Material</i>	53% Leinen/ <i>Linen</i> 19% Baumwolle/ <i>Cotton</i> 16% Viskose/ <i>Viscose</i> 8% Nylon/ <i>Nylon</i> 4% Polyamid/ <i>Polyamide</i>
Stoffart <i>Fabric type</i>	Flachgewebe <i>Flat woven fabric</i>
Scheuertouren <i>Martindale cycles</i>	25.000
Lichtechtheit <i>Fastness to light</i>	4–5 (ISO 1–8)
Brandschutz <i>Fire protection</i>	BS 5852 Part 1 Ignition Source 0 BS 5852 Part 1 Ignition Source 1 Cal. TB 117-2013
Pflegehinweise <i>Care cleaning</i>	    
Preisgruppe <i>Price group</i>	26



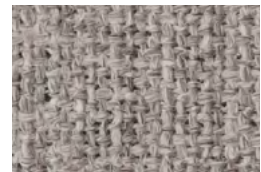
7764 MELANGE  
Natural Elegance Off White



7763 SILVER  
Natural Elegance Shadow



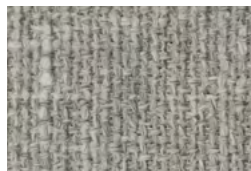
7761 SHADOW  
Natural Elegance Shadow



7762 ASH  
Natural Elegance Shadow

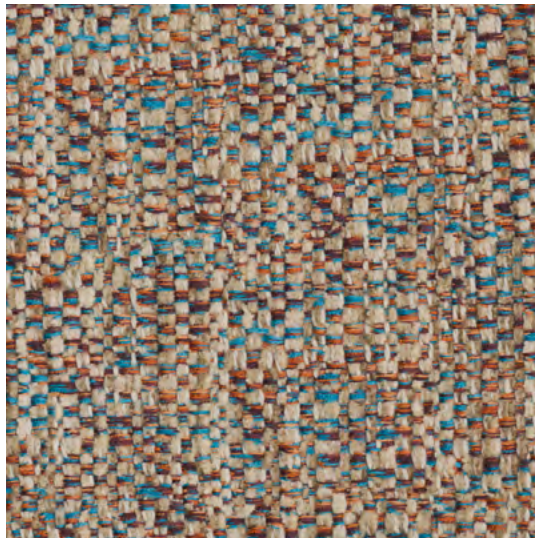


7760 STEEL  
Natural Elegance Shadow



7778 STONE  
Natural Elegance Shadow

# KIMALI



Material  
*Material* 65% Baumwolle/*Cotton*  
26% Viskose/*Viscose*  
9% Polyamid/*Polyamide*

Stoffart  
*Fabric type* Jacquard Flachgewebe  
*Jacquard flat woven fabric*

Scheuertouren  
*Martindale cycles* 40.000

Lichtechtheit  
*Fastness to light* 4–6 (ISO 1–8)

Brandschutz  
*Fire protection* Cal. TB 117-2013

Pflegehinweise  
*Care cleaning*

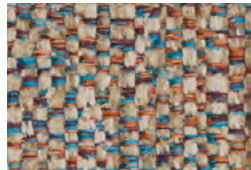


Preisgruppe  
*Price group* 27

7692 BLUEWASH



7690 CARNELIAN  
Natural Elegance Africa I

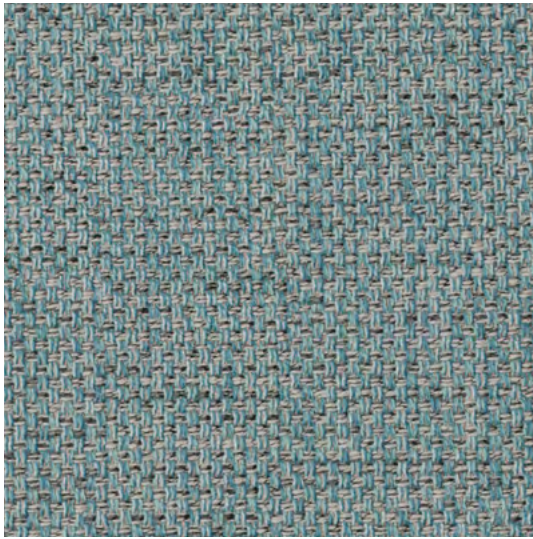


7692 BLUEWASH  
Natural Elegance Africa II



7693 AQUA  
Natural Elegance Africa II

# LOFT



7742 AZURE

Material  
*Material* 54% Baumwolle/*Cotton*  
46% Polyester/*Polyester*

Stoffart  
*Fabric type* Flachgewebe  
*Flat woven fabric*

Scheuertouren  
*Martindale cycles* 20.000

Lichtechtheit  
*Fastness to light* 4–5 (ISO 1–8)

Brandschutz  
*Fire protection* Cal. TB 117-2013

Pflegehinweise  
*Care cleaning*



Preisgruppe  
*Price group* 25



7740 TIMBER  
Natural Elegance Timber



7741 BARK  
Natural Elegance Mineral

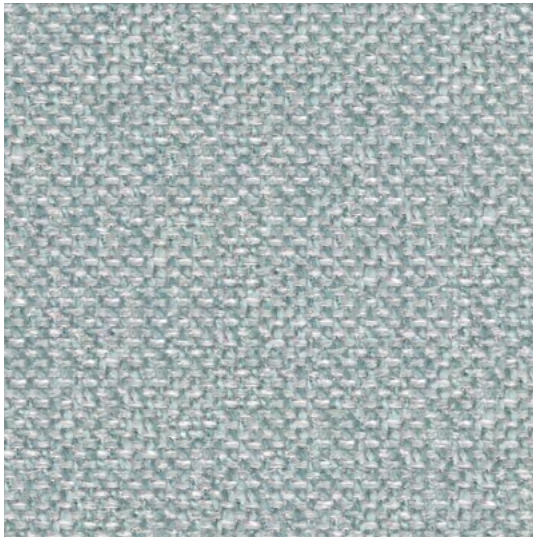


7744 ROSE QUARTZ  
Natural Elegance Africa I








7742 AZURE  
Natural Elegance Africa II

# LUCIA



7704 GLACIER

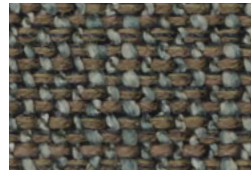
Material <i>Material</i>	30% Baumwolle/ <i>Cotton</i> 28% Viskose/ <i>Viscose</i> 13% Wolle/ <i>Wool</i> 13% Polyacryl/ <i>Polyacrylic</i> 9% Leinen/ <i>Linen</i> 4% Seide/ <i>Silk</i> 3% Nylon/ <i>Nylon</i>
Stoffart <i>Fabric type</i>	Flachgewebe <i>Flat woven fabric</i>
Scheuertouren <i>Martindale cycles</i>	50.000
Lichtechtheit <i>Fastness to light</i>	4–6 (ISO 1–8)
Brandschutz <i>Fire protection</i>	BS 5852 Part 1 Ignition Source 0 BS 5852 Part 1 Ignition Source 1 Cal. TB 117-2013
Pflegehinweise <i>Care cleaning</i>	    
Preisgruppe <i>Price group</i>	26



7685 OFF WHITE  
Natural Elegance Off White



7704 GLACIER  
Natural Elegance Iceland



7681 MINERAL  
Natural Elegance Mineral



7680 MOONLIGHT  
Natural Elegance Mineral



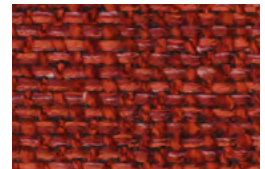
7694 CORN  
Natural Elegance Africa II



7739 LAGOON  
Natural Elegance Africa II



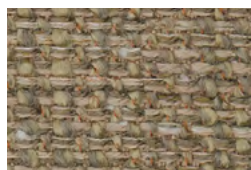
7688 TURQUOISE  
Natural Elegance Africa II



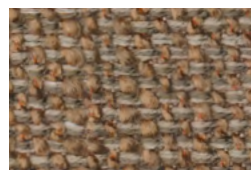
7686 TOMATO  
Natural Elegance Africa I



7729 AQUAMARINE  
Natural Elegance Africa II

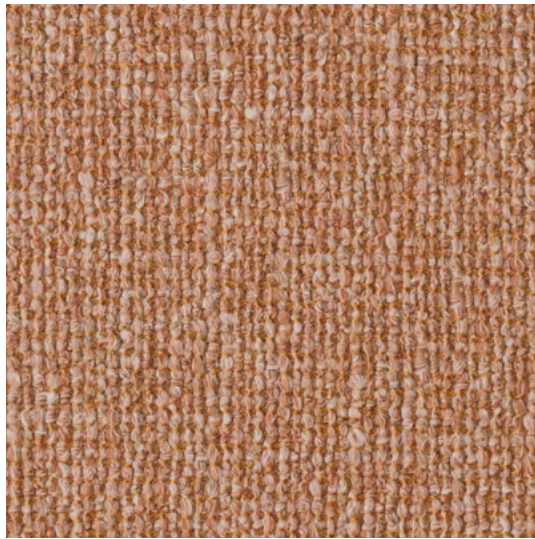


7695 NUTMEG  
Natural Elegance Atacama








7698 CINNAMON  
Natural Elegance Atacama

# NAMIB



7923 ROOIBOS

Material <i>Material</i>	33% Leinen/Linen 20% Baumwolle/Cotton 20% Wolle/Wool 18% Viskose/Viscose 9% Polyester/Polyester
Stoffart <i>Fabric type</i>	Flachgewebe <i>Flat woven fabric</i>
Scheuertouren <i>Martindale cycles</i>	35.000
Lichtechtheit <i>Fastness to light</i>	5 (ISO 1–8)
Brandschutz <i>Fire protection</i>	BS 5852 Part 1 Ignition Source 0 BS 5852 Part 1 Ignition Source 1 Cal. TB 117-2013 DIN EN 1021 Part 1+2
Pflegehinweise <i>Care cleaning</i>	    
Preisgruppe <i>Price group</i>	30



7920 MOON  
Natural Elegance Chess



7921 ORYX  
Natural Elegance Pearl



7924 LIMESTONE  
Natural Elegance Iceland



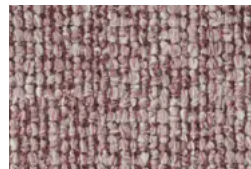
7926 REED  
Natural Elegance Africa II



7922 MARULA  
Natural Elegance Africa I



7923 ROOIBOS  
Natural Elegance Africa I



7927 RED SAND  
Natural Elegance Africa I



7925 AQUA  
Natural Elegance Africa II

# PURO



7750 CREAM

Material 70% Leinen/*Linen*  
*Material* 20% Viskose/*Viscose*  
 10% Polyamid/*Polyamide*

Stoffart Flachgewebe  
*Fabric type Flat woven fabric*

Scheuertouren 30.000  
*Martindale cycles*

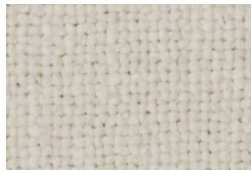
Lichtechtheit 5 (ISO 1–8)  
*Fastness to light*

Brandschutz Cal. TB 117-2013  
*Fire protection*

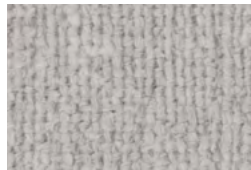
Pflegehinweise  
*Care cleaning*



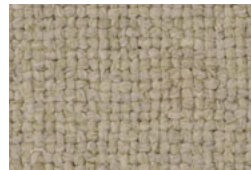
Preisgruppe 28  
*Price group*



7750 CREAM  
 Natural Elegance Limestone



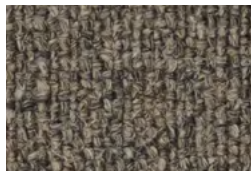
7752 SHADOW  
 Natural Elegance Shadow



7751 MELANGE  
 Natural Elegance Atacama

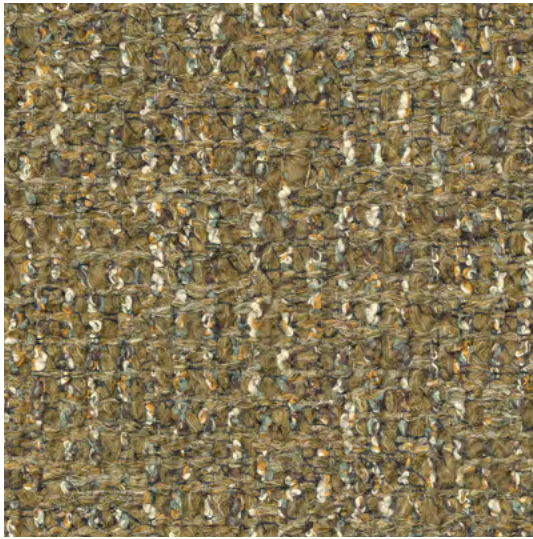


7759 MINERAL  
 Natural Elegance Atacama








7753 SISAL  
 Natural Elegance Atacama

# RUBAN



7946 MOSS

Material <i>Material</i>	23% Leinen/ <i>Linen</i> 22% Viskose/ <i>Viscose</i> 20% Polyester/ <i>Polyester</i> 19% Polyacryl/ <i>Polyacrylic</i> 16% Baumwolle/ <i>Cotton</i>
Stoffart <i>Fabric type</i>	Flachgewebe <i>Flat woven fabric</i>
Scheuertouren <i>Martindale cycles</i>	30.000
Lichtechtheit <i>Fastness to light</i>	4–5 (ISO 1–8)
Brandschutz <i>Fire protection</i>	BS 5852 Part 1 Ignition Source 0 BS 5852 Part 1 Ignition Source 1 Cal. TB 117-2013 DIN EN 1021 Part 1 + 2
Pflegehinweise <i>Care cleaning</i>	    
Preisgruppe <i>Price group</i>	32



7940 MILKY QUARTZ  
Natural Elegance Pearl



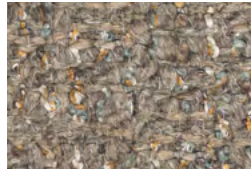
7941 LIGHT GREY  
Natural Elegance Pearl



7942 ONYX  
Natural Elegance Moonlight



7944 ECRU  
Natural Elegance Chocolate



7945 FLINTSTONE  
Natural Elegance Moonlight



7946 MOSS  
Natural Elegance Timber








7943 ROSY  
Natural Elegance Africa I

# SAFIRE



0014 DESERT

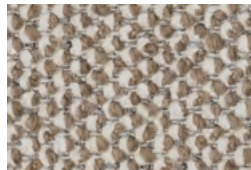
Material <i>Material</i>	43% Viskose/ <i>Viscose</i> 17% Polyacryl/ <i>Polyacrylic</i> 15% Schurwolle/ <i>Pure new wool</i> 9% Baumwolle/ <i>Cotton</i> 8% Leinen/ <i>Linen</i> 8% Polyester/ <i>Polyester</i>
Stoffart <i>Fabric type</i>	Bouclé, Chenille Flachgewebe <i>Bouclé, Chenille flat woven fabric</i>
Scheuertouren <i>Martindale cycles</i>	30.000
Lichtechtheit <i>Fastness to light</i>	5–6 (ISO 1–8)
Brandschutz <i>Fire protection</i>	BS 5852 Part 1 Ignition Source 0 BS 5852 Part 1 Ignition Source 1 Cal. TB 117-2013 DIN EN 1021 Part 1+2
Pflegehinweise <i>Care cleaning</i>	    
Preisgruppe <i>Price group</i>	40



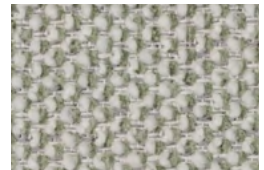
0007 CHAMPAGNE  
Natural Elegance Off White



0014 DESERT  
Natural Elegance Off White



0004 SOIL  
Natural Elegance Timber





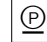


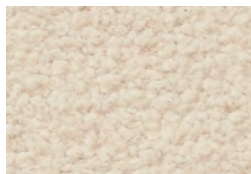
0006 SAGE  
Natural Elegance Shadow

# SELENE



8001 AUBURN

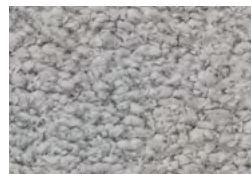
Material <i>Material</i>	63% Baumwolle/ <i>Cotton</i> 37% Polyester/ <i>Polyester</i>
Stoffart <i>Fabric type</i>	Chenille Flachgewebe <i>Chenille flat woven fabric</i>
Scheuertouren <i>Martindale cycles</i>	50.000
Lichtechtheit <i>Fastness to light</i>	5 (ISO 1 – 8)
Brandschutz <i>Fire protection</i>	BS 5852 Part 1 Ignition Source 0 BS 5852 Part 1 Ignition Source 1 Cal. TB 117-2013
Pflegehinweise <i>Care cleaning</i>	    
Preisgruppe <i>Price group</i>	30



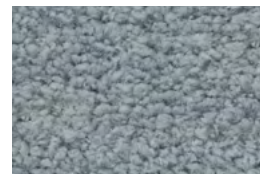
7997 COTTON  
Natural Elegance Off White



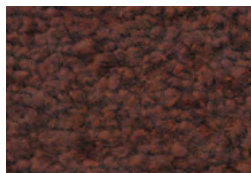
7998 COQUINA  
Natural Elegance Limestone



7999 TIN  
Natural Elegance Pearl



8000 OPALINE  
Natural Elegance Chess

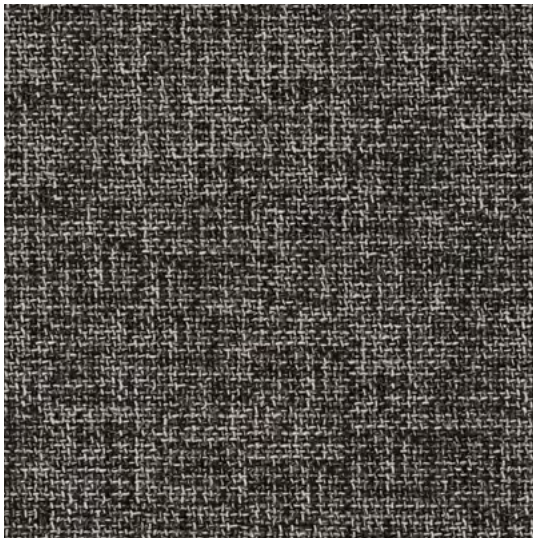


8001 AUBURN  
Natural Elegance Chocolate



8002 GRAPHITE  
Natural Elegance Iceland

# TAO



Material  
*Material* 50% Baumwolle/*Cotton*  
21% Polyacryl/*Polyacrylic*  
13% Polyester/*Polyester*  
9% Leinen/*Linen*  
7% Polyamid/*Polyamide*

Stoffart  
*Fabric type* Flachgewebe  
*Flat woven fabric*

Scheuertouren  
*Martindale cycles* 45.000

Lichtechtheit  
*Fastness to light* 4–6 (ISO 1–8)

Brandschutz  
*Fire protection* Cal. TB 117-2013

Pflegehinweise  
*Care cleaning*



Preisgruppe  
*Price group* 26

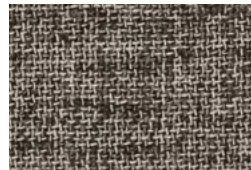
7730 MOONLIGHT



7732 SILVER  
Natural Elegance Moonlight



7733 PLATIN  
Natural Elegance Moonlight



7734 CHOCOLATE  
Natural Elegance Chocolate



7730 MOONLIGHT  
Natural Elegance Moonlight

# TAPIS



7980 ALABASTER

Material  
*Material* 34% Baumwolle/*Cotton*  
33% Wolle/*Wool*  
19% Polyacrylnitril/*Polyacrylonitrile*  
8% Polyamid/*Polyamide*  
6% Polyester/*Polyester*

Stoffart  
*Fabric type* Bouclé  
*Bouclé*

Scheuertouren  
*Martindale cycles* 90.000

Lichtechtheit  
*Fastness to light* 5–7 (ISO 1–8)

Brandschutz  
*Fire protection* BS 5852 Part 1 Ignition Source 0  
BS 5852 Part 1 Ignition Source 1  
Cal. TB 117-2013  
DIN EN 1021 Part 1+2

Pflegehinweise  
*Care cleaning*



Preisgruppe  
*Price group* 30

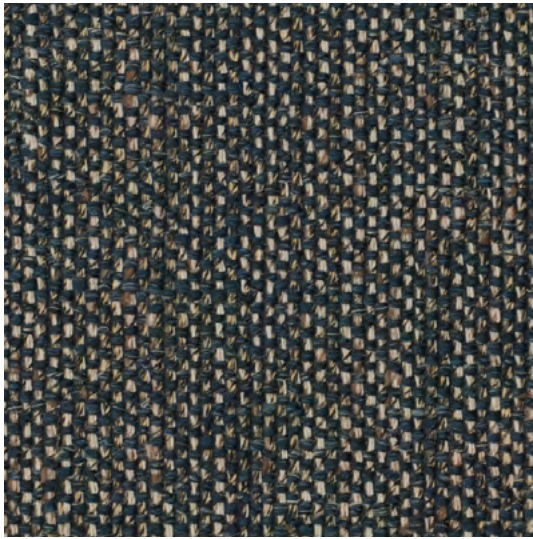


7980 ALABASTER  
Natural Elegance Pearl



7981 SHINGLE  
Natural Elegance Limestone

# TOGBA



7852 BLUE BRONZE

Material  
Material 41% Viskose/Viscose  
26% Polyacryl/Polyacrylic  
18% Baumwolle/Cotton  
7% Leinen/Linen  
7% Polyester/Polyester  
1% Seide/Silk

Stoffart  
Fabric type Flachgewebe  
Flat woven fabric

Scheuertouren  
Martindale cycles 16.000

Lichtechtheit  
Fastness to light 5 (ISO 1–8)

Brandschutz  
Fire protection BS 5852 Part 1 Ignition Source 0  
BS 5852 Part 1 Ignition Source 1  
Cal. TB 117-2013

Pflegehinweise  
Care cleaning     

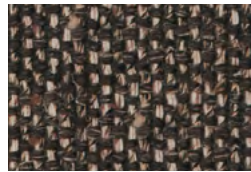
Preisgruppe  
Price group 25



7854 PEBBLE  
Natural Elegance Mineral



7855 SAHARA  
Natural Elegance Pearl



7850 TOBACCO  
Natural Elegance Chocolate





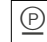


7852 BLUE BRONZE  
Natural Elegance Mineral

# TONGA



7620 MINERAL

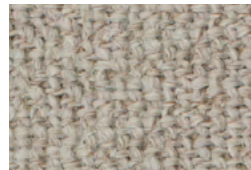
Material <i>Material</i>	48% Polyacryl/ <i>Polyacrylic</i> 24% Wolle/ <i>Wool</i> 12% Polyester/ <i>Polyester</i> 10% Nylon/ <i>Nylon</i> 6% Baumwolle/ <i>Cotton</i>
Stoffart <i>Fabric type</i>	Flachgewebe mit Fleckschutz <i>Flat woven fabric with spot protection</i>
Scheuertouren <i>Martindale cycles</i>	35.000
Lichtechtheit <i>Fastness to light</i>	4–5 (ISO 1–8)
Brandschutz <i>Fire protection</i>	BS 5852 Part 1 Ignition Source 0 BS 5852 Part 1 Ignition Source 1 Cal. TB 117-2013
Pflegehinweise <i>Care cleaning</i>	    
Preisgruppe <i>Price group</i>	25



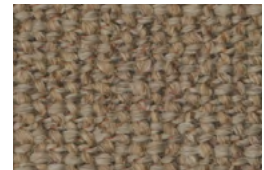
7615 OFF WHITE  
Natural Elegance Off White



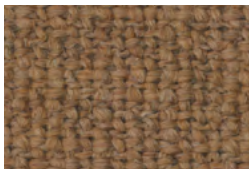
7618 SHADOW  
Natural Elegance Shadow



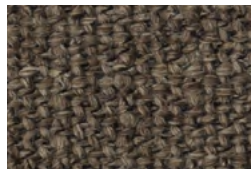
7621 CHALK  
Natural Elegance Pearl



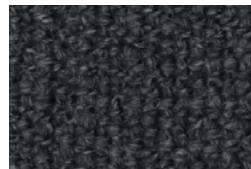
7623 SAHARA  
Natural Elegance Atacama



7622 AMBER  
Natural Elegance Atacama



7620 MINERAL  
Natural Elegance Pearl



7617 CHESS  
Natural Elegance Chess

»NATURAL ELEGANCE« FARBWELTEN – STOFFE /  
*»Natural Elegance« color worlds – fabrics*

---



»AFRICA I«  
 8 Stoffe/fabrics

*Namib 7923 rooibos  
 Namib 7922 marula  
 Kimali 7690 carnelian  
 Lucia 7686 tomato  
 Loft 7744 rose quartz  
 Gaia 7889 champagne  
 Ruban 7943 rosy  
 Namib 7927 red sand*

»AFRICA II«  
 10 Stoffe/fabrics

*Lucia 7694 corn  
 Lucia 7688 turquoise  
 Kimali 7692 bluewash  
 Kimali 7693 aqua  
 Lucia 7729 aquamarine  
 Gaia 7886 tourmaline  
 Lucia 7739 lagoon  
 Namib 7926 reed  
 Loft 7742 azure  
 Namib 7925 aqua*

»ATACAMA«  
 10 Stoffe/fabrics

*Lucia 7695 nutmeg  
 Tonga 7622 amber  
 Puro 7759 mineral  
 Lucia 7698 cinnamon  
 Tonga 7623 sahara  
 Puro 7751 melange  
 Doux 7841 sand  
 Garbo 7845 almond  
 Bogar 7831 macchiato  
 Puro 7753 sisal*

»CHESS«  
 7 Stoffe/fabrics

*Namib 7920 moon  
 Gaia 7891 platin  
 Garbo 7736 chess  
 Tonga 7617 chess  
 Aurene 7982 belladonna  
 Selene 8000 opaline  
 Gaia 7885 topaz*

»CHOCOLATE«  
 6 Stoffe/fabrics

*Gaia 7888 quartz  
 Selene 8001 auburn  
 Ruban 7944 ecru  
 Tao 7734 chocolate  
 Togba 7850 tobacco  
 Gaia 7887 amethyst*

»ICELAND«  
 7 Stoffe/fabrics

*Doux 7840 granite  
 Selene 8002 graphite  
 Namib 7924 limestone  
 Doux 7842 mineral  
 Lucia 7704 glacier  
 Gaia 7890 silver  
 Bogar 7830 nightshade*

»LIMESTONE«  
 8 Stoffe/fabrics

*Selene 7998 coquina  
 Puro 7750 cream  
 Garbo 7846 shell  
 Doux 7843 pebble  
 Bogar 7832 platinum  
 Garbo 7847 cashmere  
 Tapis 7981 shingle  
 Doux 7844 greige*

»MINERAL«  
 6 Stoffe/fabrics

*Loft 7741 bark  
 Togba 7852 blue bronze  
 Lucia 7681 mineral  
 Aurene 7983 moss  
 Lucia 7680 moonlight  
 Togba 7854 pebble*

---

»MOONLIGHT«  
6 Stoffe/fabrics

*Tao 7732 silver*  
*Tao 7730 moonlight*  
*Garbo 7738 moonlight*  
*Ruban 7942 onyx*  
*Ruban 7945 flintstone*  
*Tao 7733 platin*

»OFF WHITE«  
7 Stoffe/fabrics

*Gaia 7892 linen*  
*Safire 0014 desert*  
*Tonga 7615 off white*  
*Selene 7997 cotton*  
*Lucia 7685 off white*  
*Glint 7764 melange*  
*Safire 0007 champagne*

»PEARL«  
9 Stoffe/fabrics

*Tapis 7980 alabaster*  
*Garbo 7737 pearl*  
*Selene 7999 tin*  
*Ruban 7941 light grey*  
*Namib 7921 oryx*  
*Togba 7855 sahara*  
*Tonga 7621 chalk*  
*Ruban 7940 milky quartz*  
*Tonga 7620 mineral*

»SHADOW«  
8 Stoffe/fabrics

*Glint 7762 ash*  
*Tonga 7618 shadow*  
*Glint 7760 steel*  
*Puro 7752 shadow*  
*Glint 7761 shadow*  
*Glint 7763 silver*  
*Safire 0006 sage*  
*Glint 7778 stone*

---

»TIMBER«  
4 Stoffe/fabrics

*Garbo 7735 timber*  
*Ruban 7946 moss*  
*Loft 7740 timber*  
*Safire 0004 soil*

