

WALTER KNOLL



STOFFE 2024
Fabrics 2024

INHALT / CONTENT

BOGAR	Seite/page 3	LOFT	Seite/page 17
CARRARA	Seite/page 4	LUCIA	Seite/page 18
DIVINA MELANGE	Seite/page 5	NAMIB	Seite/page 19
DIVINA	Seite/page 6	PURO	Seite/page 20
DOUX	Seite/page 7	SAFIRE	Seite/page 21
GAIA	Seite/page 8	SAVANNAH	Seite/page 22
GARBO	Seite/page 9	SOREL	Seite/page 23
GLINT	Seite/page 10	TAO	Seite/page 24
GRACE	Seite/page 11	TOGBA	Seite/page 25
HARALD	Seite/page 12	TONGA	Seite/page 26
HEARTH	Seite/page 13	WEAVE	Seite/page 27
KIMALI	Seite/page 14	NATURAL ELEGANCE FARBWELTEN / NATURAL ELEGANCE COLOR WORLDS	Seite/page 28
KNIT	Seite/page 15		
LINO	Seite/page 16		

BOGAR



7832 PLATINUM

Material
Material

31% Viskose/Viscose
26% Baumwolle/Cotton
24% Polyacryl/Polyacrylic
10% Leinen/Linen
8% Wolle/Wool
1% Polyamid/Polyamide

Stoffart
Fabric type

Flachgewebe
Flat woven fabric

Scheuertouren
Martindale cycles

30.000

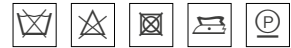
Lichtechtheit
Fastness to light

4–5 (ISO 1–8)

Brandschutz
Fire protection

Cal. TB 117-2013

Pflegehinweise
Care cleaning



Preisgruppe
Price group

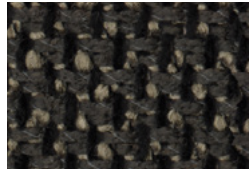
40



7832 PLATINUM
Natural Elegance Limestone

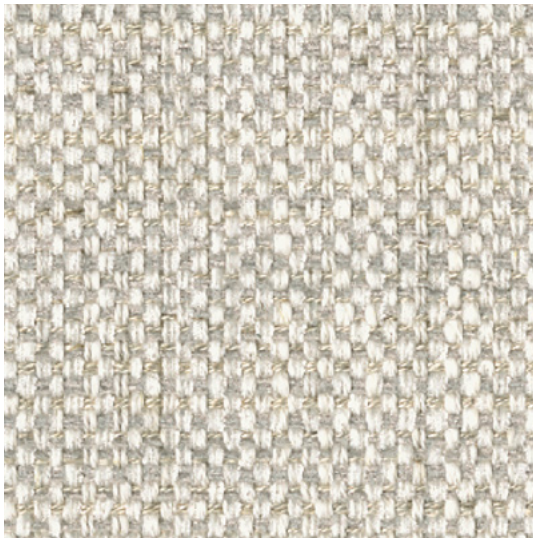


7831 MACCHIATO
Natural Elegance Atacama



7830 NIGHTSHADE
Natural Elegance Iceland

CARRARA



Material
Material 46% Baumwolle/*Cotton*
45% Viskose/*Viscose*
9% Leinen/*Linen*

Stoffart
Fabric type Chenille
Chenille

Scheuertouren
Martindale cycles 15.000

Lichtechtheit
Fastness to light 4–5 (ISO 1–8)

Pflegehinweise
Care cleaning



Preisgruppe
Price group 25

7656 PEARL








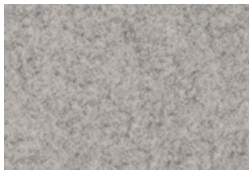
7656 PEARL
Natural Elegance Pearl

DIVINA MELANGE



120 HELLGRAU

Material <i>Material</i>	100% Schurwolle <i>Pure new wool</i>
Stoffart <i>Fabric type</i>	Flachgewebe, Wollfilz <i>Flat woven fabric, woolfelt</i>
Scheuertouren <i>Martindale cycles</i>	45.000
Lichtechtheit <i>Fastness to light</i>	5–7 (ISO 1–8)
Brandschutz <i>Fire protection</i>	BS 5852 Part 1 Ignition Source 0 BS 5852 Part 1 Ignition Source 1 Cal. TB 117-2013 DIN EN 1021 Part 1 + 2
Pflegehinweise <i>Care cleaning</i>	    
Preisgruppe <i>Price group</i>	26



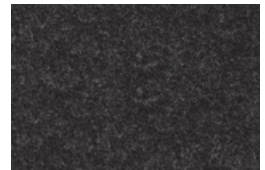
120 HELLGRAU



260 CAPPUCCINO








170 MITTELGRAU



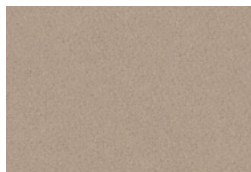
180 DUNKELGRAU

DIVINA

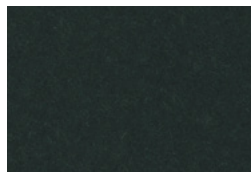


Material <i>Material</i>	100% Schurwolle <i>Pure new wool</i>
Stoffart <i>Fabric type</i>	Flachgewebe, Wollfilz <i>Flat woven fabric, woolfelt</i>
Scheuertouren <i>Martindale cycles</i>	45.000
Lichtechtheit <i>Fastness to light</i>	5-7 (ISO 1-8)
Brandschutz <i>Fire protection</i>	BS 5852 Part 1 Ignition Source 0 BS 5852 Part 1 Ignition Source 1 Cal. TB 117-2013 DIN EN 1021 Part 1 + 2
Pflegehinweise <i>Care cleaning</i>	    
Preisgruppe <i>Price group</i>	26

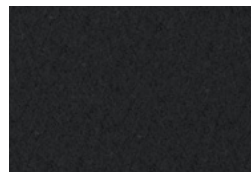
542 ORANGE



224 MUSCHEL



181 SCHWARZ-OLIV



384 TORF



191 SCHWARZ



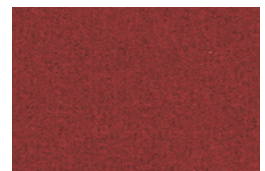
426 PAPAYA



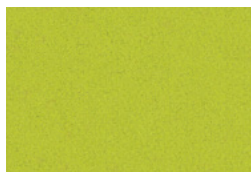
542 ORANGE



623 TOMATO



584 HAGEBUTTE



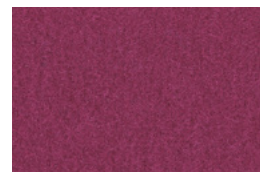
936 GREEN APPLE



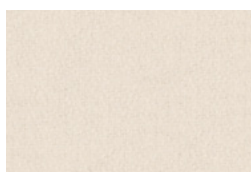
922 GREEN



666 VIOLET



662 FUCHSIA





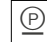


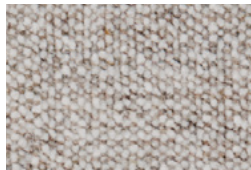
106 WOOL

DOUX

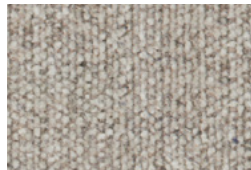


7841 SAND

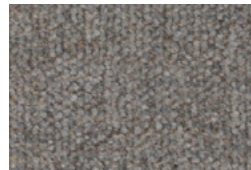
Material <i>Material</i>	35% Wolle/Wool 35% Viskose/Viscose 21% Baumwolle/Cotton 9% Polyamid/Polyamide
Stoffart <i>Fabric type</i>	Chenille Chenille
Scheuertouren <i>Martindale cycles</i>	25.000
Lichtechtheit <i>Fastness to light</i>	4–6 (ISO 1–8)
Brandschutz <i>Fire protection</i>	BS 5852 Part 1 Ignition Source 0 BS 5852 Part 1 Ignition Source 1 Cal. TB 117-2013 DIN EN 1021 Part 1 + 2
Pflegehinweise <i>Care cleaning</i>	    
Preisgruppe <i>Price group</i>	30



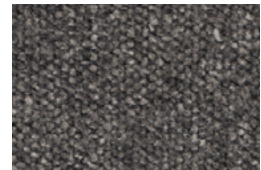
7843 PEBBLE
Natural Elegance Limestone



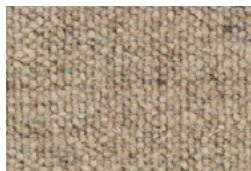
7844 GREIGE
Natural Elegance Limestone



7842 MINERAL
Natural Elegance Iceland

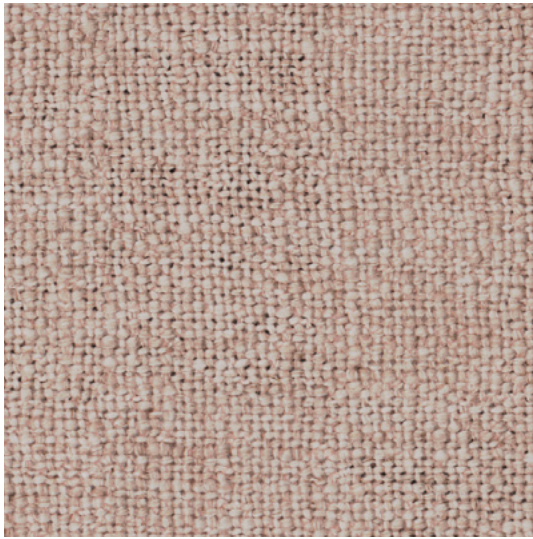


7840 GRANITE
Natural Elegance Iceland



7841 SAND
Natural Elegance Atacama

GAIA



Material
Material 52% Polyacryl/*Polyacrylic*
40% Leinen/*Linen*
8% Nylon/*Nylon*

Stoffart
Fabric type Flachgewebe
Flat woven fabric

Scheuertouren
Martindale cycles 20.000

Lichtechtheit
Fastness to light 4 (ISO 1–8)

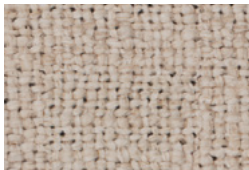
Brandschutz
Fire protection Cal. TB 117-2013

Pflegehinweise
Care cleaning



Preisgruppe
Price group 25

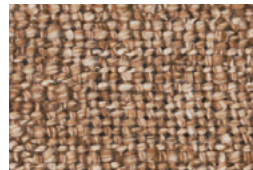
7889 CHAMPAGNE



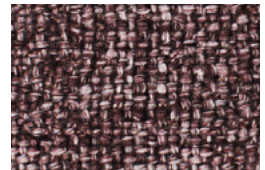
7892 LINEN
Natural Elegance Off White



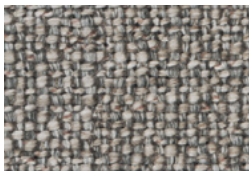
7889 CHAMPAGNE
Natural Elegance Africa I



7888 QUARTZ
Natural Elegance Chocolate



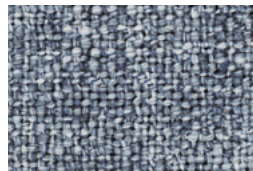
7887 AMETHYST
Natural Elegance Chocolate



7891 PLATIN
Natural Elegance Chess



7890 SILVER
Natural Elegance Iceland

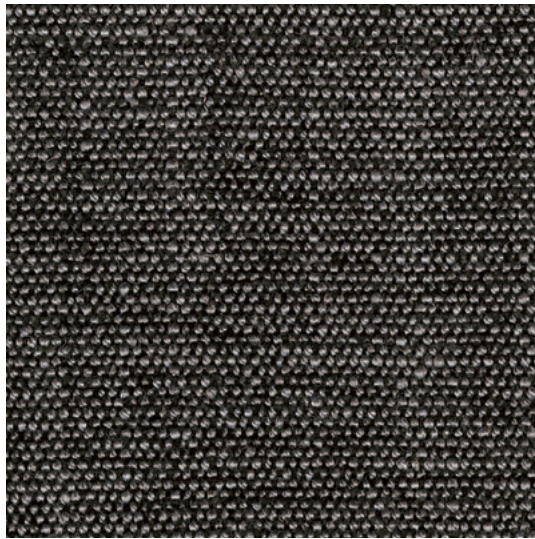


7885 TOPAZ
Natural Elegance Chess



7886 TOURMALINE
Natural Elegance Africa II

GARBO



Material
Material 45% Viskose/*Viscose*
30% Polyacryl/*Polyacrylic*
15% Leinen/*Linen*
6% Baumwolle/*Cotton*
4% Polyester/*Polyester*

Stoffart
Fabric type Chenille
Chenille

Scheuertouren
Martindale cycles 45.000

Lichtechtheit
Fastness to light 4–5 (ISO 1–8)

Brandschutz
Fire protection Cal. TB 117-2013

Pflegehinweise
Care cleaning

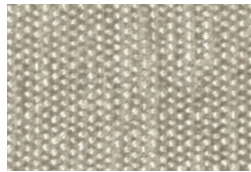


Preisgruppe
Price group 25

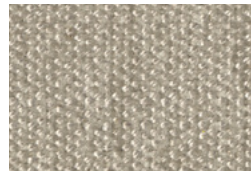
7738 MOONLIGHT



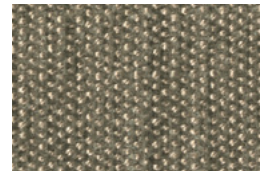
7737 PEARL
Natural Elegance Pearl



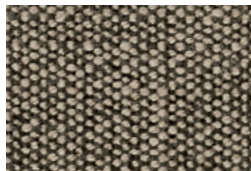
7846 SHELL
Natural Elegance Limestone



7847 CASHMERE
Natural Elegance Limestone



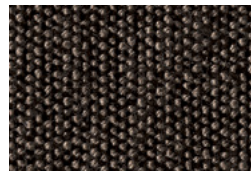
7845 ALMOND
Natural Elegance Atacama



7735 TIMBER
Natural Elegance Timber



7738 MOONLIGHT
Natural Elegance Moonlight








7736 CHESS
Natural Elegance Chess

GLINT



7778 STONE

Material <i>Material</i>	53% Leinen/ <i>Linen</i> 19% Baumwolle/ <i>Cotton</i> 16% Viskose/ <i>Viscose</i> 8% Nylon/ <i>Nylon</i> 4% Polyamid/ <i>Polyamide</i>
Stoffart <i>Fabric type</i>	Flachgewebe <i>Flat woven fabric</i>
Scheuertouren <i>Martindale cycles</i>	25.000
Lichtechtheit <i>Fastness to light</i>	4–5 (ISO 1–8)
Brandschutz <i>Fire protection</i>	BS 5852 Part 1 Ignition Source 0 BS 5852 Part 1 Ignition Source 1 Cal. TB 117-2013
Pflegehinweise <i>Care cleaning</i>	    
Preisgruppe <i>Price group</i>	26



7764 MELANGE
Natural Elegance Off White



7763 SILVER
Natural Elegance Shadow



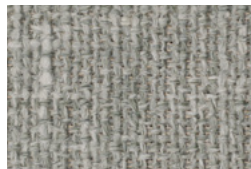
7761 SHADOW
Natural Elegance Shadow



7762 ASH
Natural Elegance Shadow



7760 STEEL
Natural Elegance Shadow



7778 STONE
Natural Elegance Shadow

GRACE



Material 71% Viskose/Viscose
 Material 18% Baumwolle/Cotton
 10% Leinen/Linen
 1% Polyamid/Polyamide

Stoffart Chenille
 Fabric type Chenille

Scheuertouren 35.000
 Martindale cycles

Lichtechtheit 4 (ISO 1 – 8)
 Fastness to light

Pflegehinweise
 Care cleaning

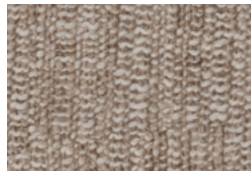


Preisgruppe 40
 Price group

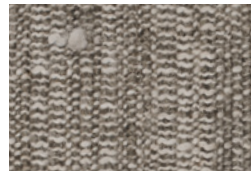
7902 STEEL



7901 SILVER
 Natural Elegance Limestone

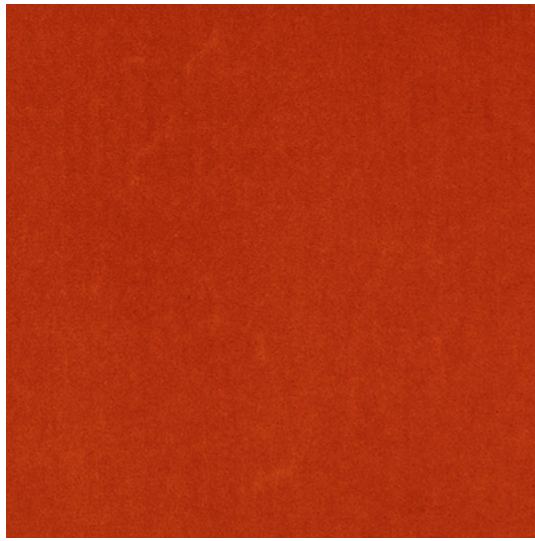


7900 GOLDEN SAND
 Natural Elegance Pearl



7902 STEEL
 Natural Elegance Pearl

HARALD








Material
Material 100% Baum-
wolle/Cotton

Stoffart
Fabric type Velours
Velour

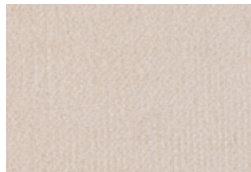
Scheuertouren
Martindale cycles 100.000

Lichtechtheit
Fastness to light 5–6 (ISO 1–8)

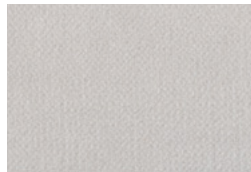
Pflegehinweise
Care cleaning     

Preisgruppe
Price group 32

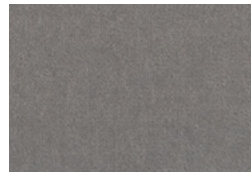
512 PUMPKIN



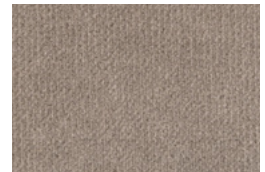
212 OFF WHITE



123 PEARL



133 SILVER
Natural Elegance Iceland



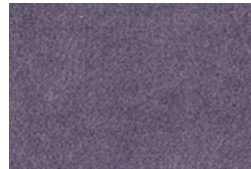
143 SMOKY QUARTZ
Natural Elegance Limestone
Natural Elegance Timber



443 AMBER
Natural Elegance Africa II



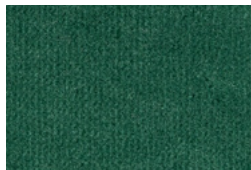
823 JADE
Natural Elegance Africa II
Natural Elegance Africa III



652 BLUE GREY
Natural Elegance Moonlight



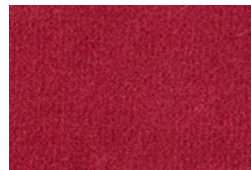
242 MINERAL
Natural Elegance Mineral



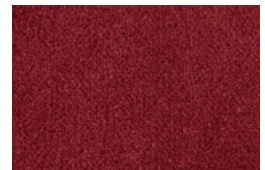
952 FOREST GREEN



512 PUMPKIN
Natural Elegance Africa I



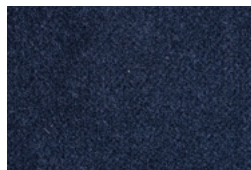
612 ROSE
Natural Elegance Africa I



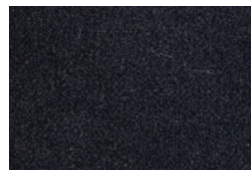
582 RED GRAPE
Natural Elegance Chocolate



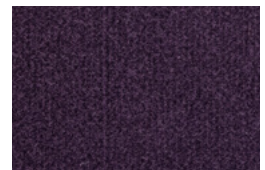
182 DARK JADE
Natural Elegance Chess



792 OCEAN
Natural Elegance Chess

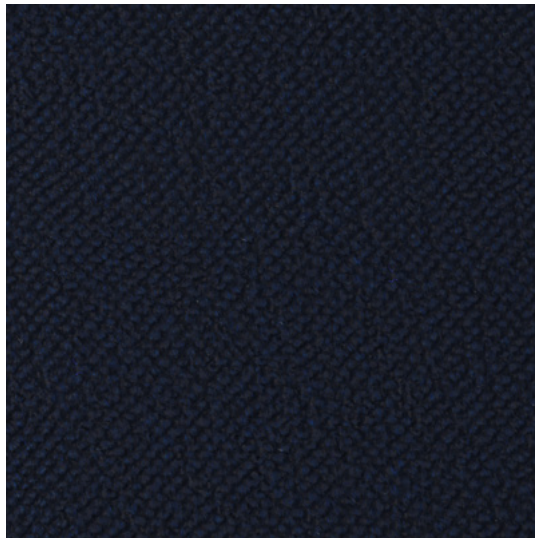


192 BLACK
Natural Elegance Mineral



692 AUBERGINE
Natural Elegance Chocolate

HEARTH



Material 32% Wolle/Wool
 Material 31% Acryl/Acrylic
 30% Baumwolle/Cotton
 7% Polyester/Polyester

Stoffart Bouclé
 Fabric type Bouclé

Scheuertouren 35.000
 Martindale cycles

Lichtechtheit 5-6 (ISO 1-8)
 Fastness to light

Brandschutz Cal. TB 117-2013
 Fire protection

Pflegehinweise 
 Care cleaning

Preisgruppe 40
 Price group

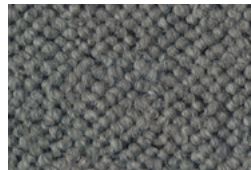
011 UNDERSEA



001 WEDDING
 Natural Elegance Off White



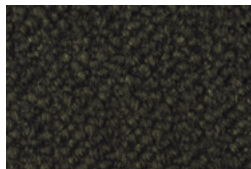
007 AMPHITHEATER
 Natural Elegance Off White



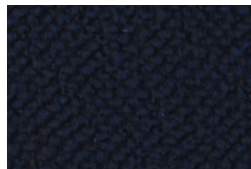
013 MYSTICAL
 Natural Elegance Iceland



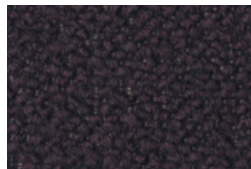
006 STARDUST
 Natural Elegance Chocolate



009 DOWNFIELD
 Natural Elegance Mineral

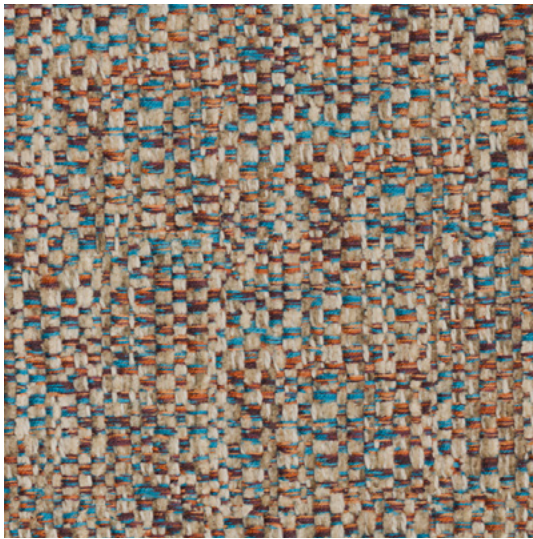


011 UNDERSEA
 Natural Elegance Chess



003 REGNANT
 Natural Elegance Mineral

KIMALI

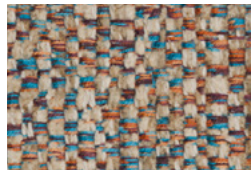


7692 BLUEWASH

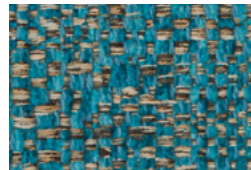
Material <i>Material</i>	65% Baumwolle/ <i>Cotton</i> 26% Viskose/ <i>Viscose</i> 9% Polyamid/ <i>Polyamide</i>
Stoffart <i>Fabric type</i>	Jacquard Flachgewebe <i>Jacquard flat woven fabric</i>
Scheuertouren <i>Martindale cycles</i>	40.000
Lichtechtheit <i>Fastness to light</i>	4–6 (ISO 1–8)
Brandschutz <i>Fire protection</i>	Cal. TB 117-2013
Pflegehinweise <i>Care cleaning</i>	    
Preisgruppe <i>Price group</i>	27



7690 CARNELIAN
Natural Elegance Africa I

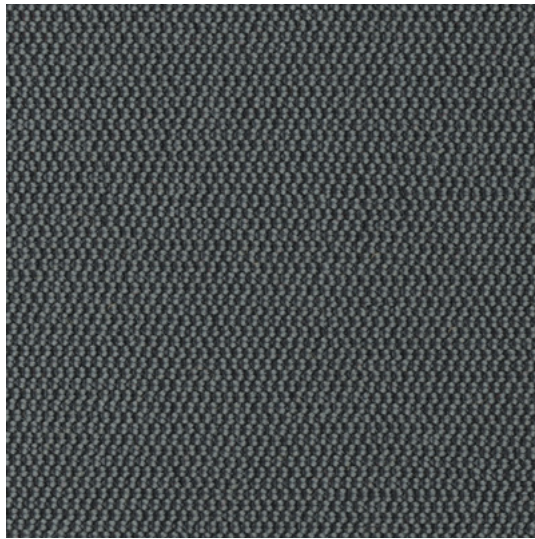


7692 BLUEWASH
Natural Elegance Africa II



7693 AQUA
Natural Elegance Africa II

KNIT



8202 SLATE

Material
Material 100% Polyester/*Polyester*

Stoffart
Fabric type Strickstoff
Knitted fabric stretch

Scheuertouren
Martindale cycles 50.000

Lichtechtheit
Fastness to light 7 (ISO 1 – 8)

Pflegehinweise
Care cleaning



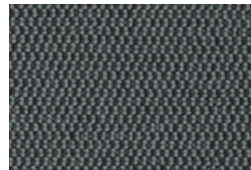
Preisgruppe
Price group 30



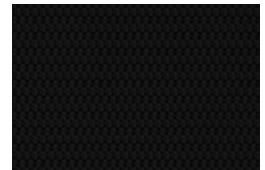
8707 SILVER



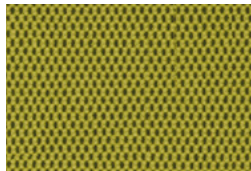
7798 SHADOW



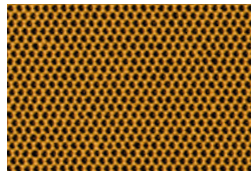
8202 SLATE



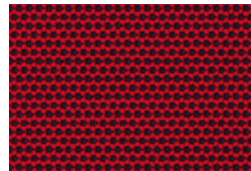
8010 BLACK



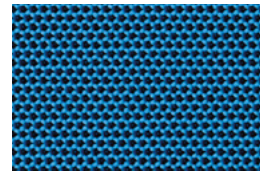
9037 KIWI



7795 HONEY

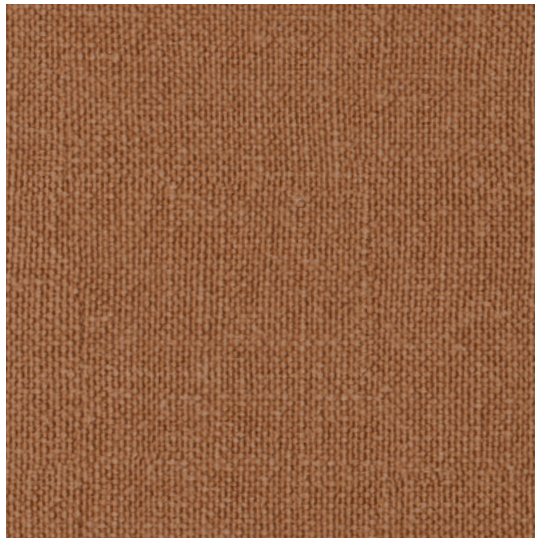


7796 CHILI



7797 AZURE

LINO








Material
Material 91% Leinen/Linen
9% Polyamid/Polyamide

Stoffart
Fabric type Flachgewebe
Flat woven fabric

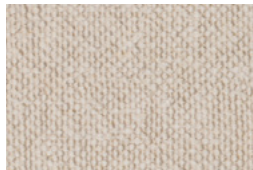
Scheuertouren
Martindale cycles 30.000

Lichtechtheit
Fastness to light 4 (ISO 1 – 8)

Pflegehinweise
Care cleaning     

Preisgruppe
Price group 28

7895 CINNAMON



7705 OFF WHITE
Natural Elegance Off White



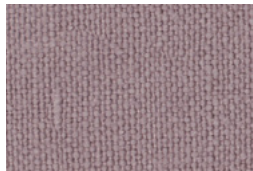
7707 SHADOW
Natural Elegance Moonlight



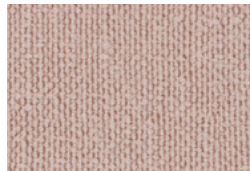
7708 MOONLIGHT
Natural Elegance Moonlight



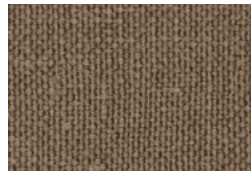
7706 PEARL
Natural Elegance Pearl



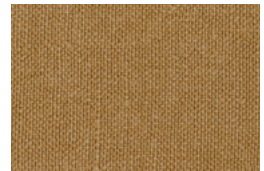
7899 MAGNOLIA
Natural Elegance Africa I



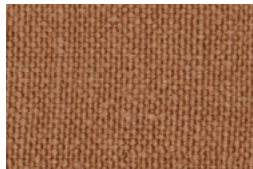
7896 BLUSH ROSE
Natural Elegance Africa I
Natural Elegance Africa III



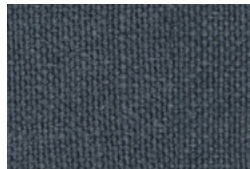
7709 TIMBER
Natural Elegance Chocolate



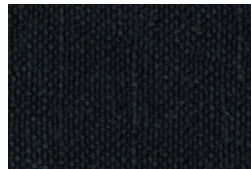
7894 RYE
Natural Elegance Africa III



7895 CINNAMON
Natural Elegance Africa I
Natural Elegance Africa III

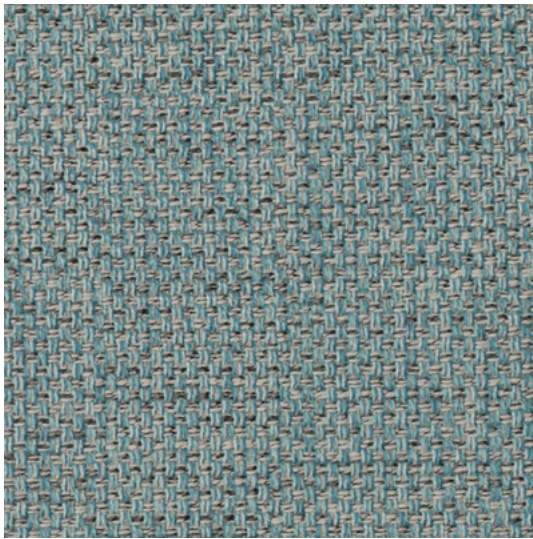


7897 DENIM
Natural Elegance Africa II
Natural Elegance Africa III



7714 COAL
Natural Elegance Moonlight

LOFT



7742 AZURE

Material
Material 54% Baumwolle/*Cotton*
46% Polyester/*Polyester*

Stoffart
Fabric type Flachgewebe
Flat woven fabric

Scheuertouren
Martindale cycles 20.000

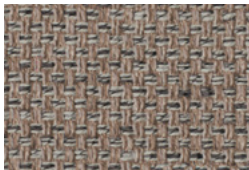
Lichtechtheit
Fastness to light 4–5 (ISO 1–8)

Brandschutz
Fire protection Cal. TB 117-2013

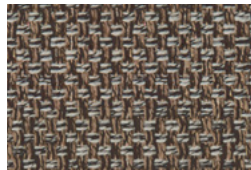
Pflegehinweise
Care cleaning



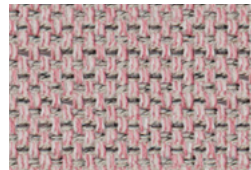
Preisgruppe
Price group 25



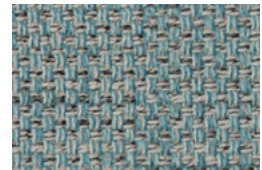
7740 TIMBER
Natural Elegance Timber



7741 BARK
Natural Elegance Mineral

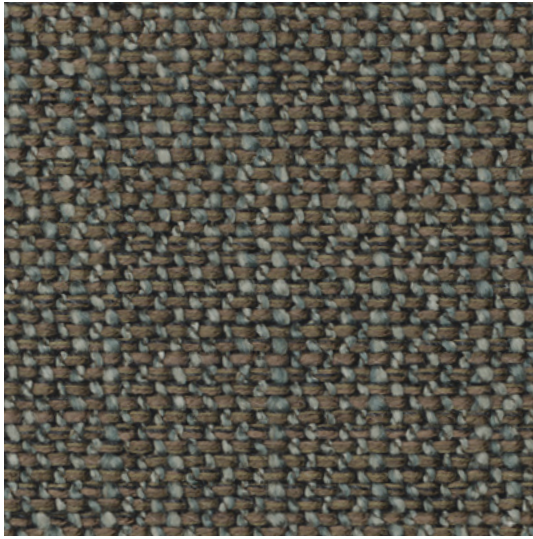


7744 ROSE QUARTZ
Natural Elegance Africa I








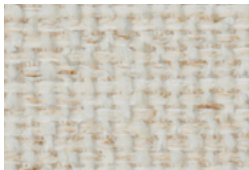
7742 AZURE
Natural Elegance Africa II

LUCIA



7681 MINERAL

Material <i>Material</i>	30% Baumwolle/ <i>Cotton</i> 28% Viskose/ <i>Viscose</i> 13% Wolle/ <i>Wool</i> 13% Polyacryl/ <i>Polyacrylic</i> 9% Leinen/ <i>Linen</i> 4% Seide/ <i>Silk</i> 3% Nylon/ <i>Nylon</i>
Stoffart <i>Fabric type</i>	Flachgewebe <i>Flat woven fabric</i>
Scheuertouren <i>Martindale cycles</i>	50.000
Lichtechtheit <i>Fastness to light</i>	4–6 (ISO 1–8)
Brandschutz <i>Fire protection</i>	BS 5852 Part 1 Ignition Source 0 BS 5852 Part 1 Ignition Source 1 Cal. TB 117-2013
Pflegehinweise <i>Care cleaning</i>	    
Preisgruppe <i>Price group</i>	26



7685 OFF WHITE
Natural Elegance Off White



7695 NUTMEG
Natural Elegance Atacama



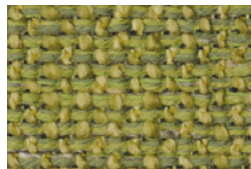
7681 MINERAL
Natural Elegance Mineral



7680 MOONLIGHT
Natural Elegance Mineral



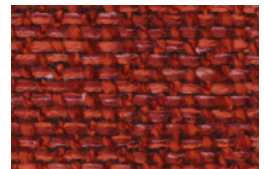
7694 CORN
Natural Elegance Africa II



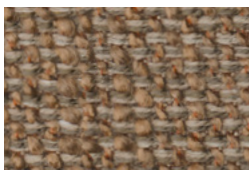
7689 LIME
Natural Elegance Africa II



7688 TURQUOISE
Natural Elegance Africa II

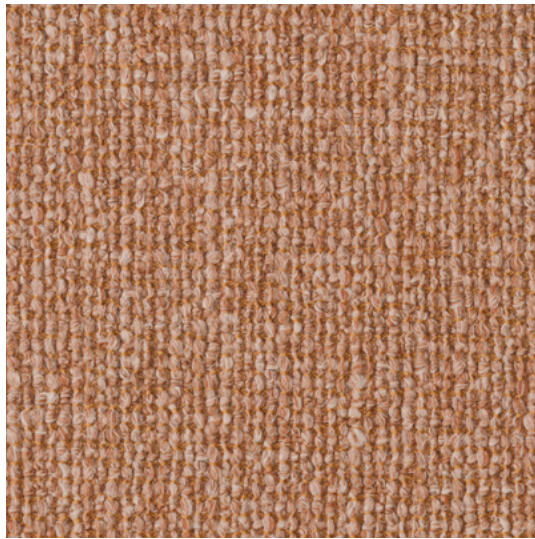


7686 TOMATO
Natural Elegance Africa I








7698 CINNAMON
Natural Elegance Atacama

NAMIB



7923 ROOIBOS

Material <i>Material</i>	33% Leinen/Linen 20% Baumwolle/Cotton 20% Wolle/Wool 18% Viskose/Viscose 9% Polyester/Polyester
Stoffart <i>Fabric type</i>	Flachgewebe <i>Flat woven fabric</i>
Scheuertouren <i>Martindale cycles</i>	35.000
Lichtechtheit <i>Fastness to light</i>	5 (ISO 1–8)
Brandschutz <i>Fire protection</i>	BS 5852 Part 1 Ignition Source 0 BS 5852 Part 1 Ignition Source 1 Cal. TB 117-2013 DIN EN 1021 Part 1 + 2
Pflegehinweise <i>Care cleaning</i>	    
Preisgruppe <i>Price group</i>	30



7920 MOON
Natural Elegance Chess



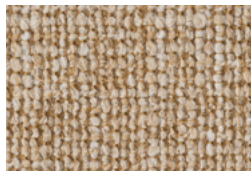
7921 ORYX
Natural Elegance Pearl



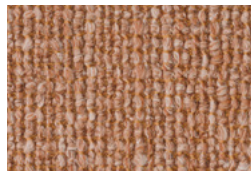
7924 LIMESTONE
Natural Elegance Iceland



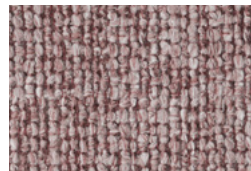
7926 REED
Natural Elegance Africa III



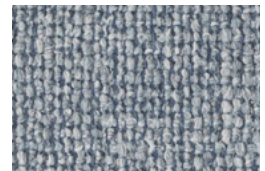
7922 MARULA
Natural Elegance Africa III



7923 ROOIBOS
Natural Elegance Africa III



7927 RED SAND
Natural Elegance Africa III



7925 AQUA
Natural Elegance Africa III

PURO



Material 70% Leinen/*Linen*
 Material 20% Viskose/*Viscose*
 10% Polyamid/*Polyamide*

Stoffart Flachgewebe
 Fabric type *Flat woven fabric*

Scheuertouren 30.000
 Martindale cycles

Lichtechtheit 5 (ISO 1–8)
 Fastness to light

Brandschutz Cal. TB 117-2013
 Fire protection

Pflegehinweise
 Care cleaning

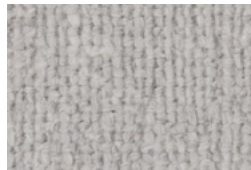


Preisgruppe 28
 Price group

7750 CREAM



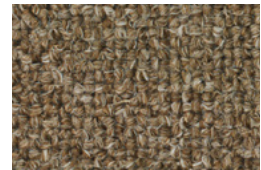
7750 CREAM
 Natural Elegance Limestone



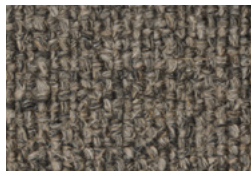
7752 SHADOW
 Natural Elegance Shadow



7751 MELANGE
 Natural Elegance Atacama

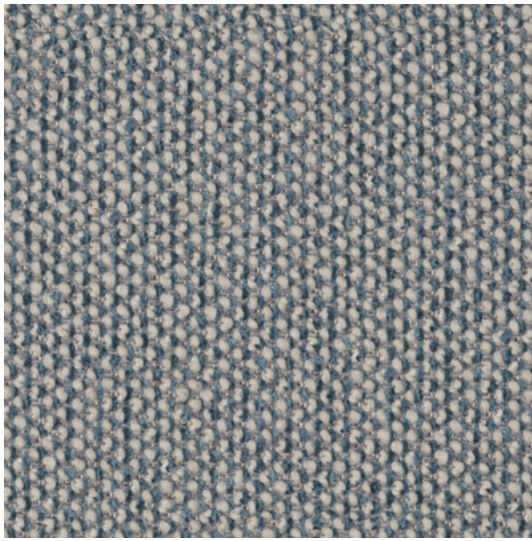


7759 MINERAL
 Natural Elegance Atacama








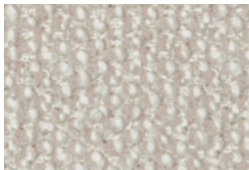
7753 SISAL
 Natural Elegance Atacama

SAFIRE

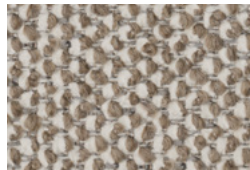


0012 SKY

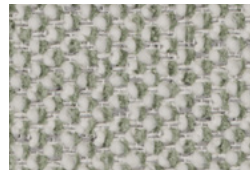
Material <i>Material</i>	43% Viskose/ <i>Viscose</i> 17% Polyacryl/ <i>Polyacrylic</i> 15% Schurwolle/ <i>Pure new wool</i> 9% Baumwolle/ <i>Cotton</i> 8% Leinen/ <i>Linen</i> 8% Polyester/ <i>Polyester</i>
Stoffart <i>Fabric type</i>	Bouclé, Chenille Flachgewebe <i>Bouclé, Chenille flat woven fabric</i>
Scheuertouren <i>Martindale cycles</i>	30.000
Lichtechtheit <i>Fastness to light</i>	5–6 (ISO 1–8)
Brandschutz <i>Fire protection</i>	BS 5852 Part 1 Ignition Source 0 BS 5852 Part 1 Ignition Source 1 Cal. TB 117-2013 DIN EN 1021 Part 1 + 2
Pflegehinweise <i>Care cleaning</i>	    
Preisgruppe <i>Price group</i>	40



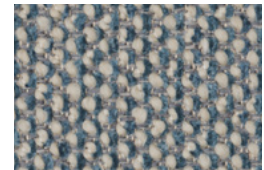
0007 CHAMPAGNE
Natural Elegance Off White



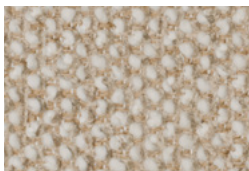
0004 SOIL
Natural Elegance Timber



0006 SAGE
Natural Elegance Shadow

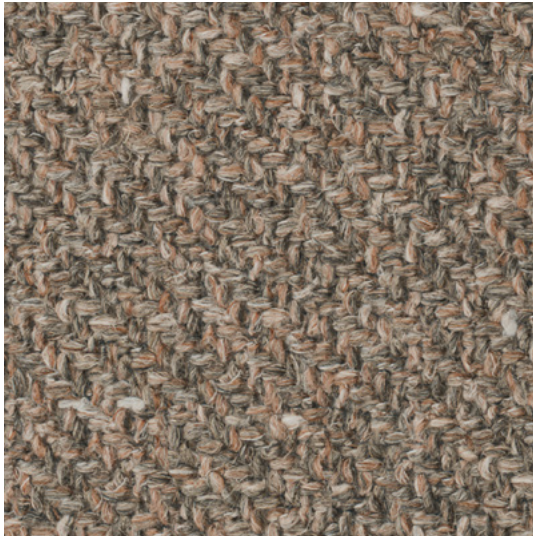


0012 SKY
Natural Elegance Chess








0014 DESERT
Natural Elegance Off White

SAVANNAH



7881 CARLINE

Material	44% Leinen/ <i>Linen</i>
Material	21% Baumwolle/ <i>Cotton</i>
	13% Viskose/ <i>Viscose</i>
	11% Schurwolle/ <i>Pure new wool</i>
	7% Polyester/ <i>Polyester</i>
	4% Polyacryl/ <i>Polyacrylic</i>
Stoffart	Flachgewebe
Fabric type	Flat woven fabric
Scheuertouren	20.000
Martindale cycles	
Lichtechtheit	5 (ISO 1–8)
Fastness to light	
Brandschutz	BS 5852 Part 1 Ignition Source 0
Fire protection	BS 5852 Part 1 Ignition Source 1
Pflegehinweise	    
Care cleaning	
Preisgruppe	28
Price group	



7883 PLATINUM
Natural Elegance Limestone



7880 GLYCINE
Natural Elegance Iceland



7881 CARLINE
Natural Elegance Chocolate



7882 ROSE
Natural Elegance Africa I



7884 JADE
Natural Elegance Limestone

SOREL



Material
Material 85% Baumwolle/*Cotton*
12% Polyamid/*Polyamide*
3% Polyacryl/*Polyacrylic*

Stoffart
Fabric type Flachgewebe
Flat woven fabric

Scheuertouren
Martindale cycles 25.000

Lichtechtheit
Fastness to light 4 (ISO 1 – 8)

Pflegehinweise
Care cleaning



Preisgruppe
Price group 30

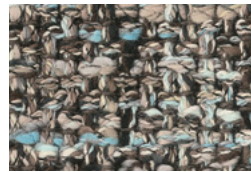
7873 TOPAZ



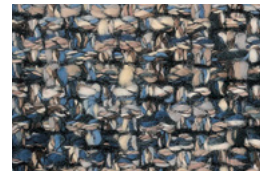
7871 SMOKE QUARTZ
Natural Elegance Timber



7870 TOURMALINE
Natural Elegance Timber

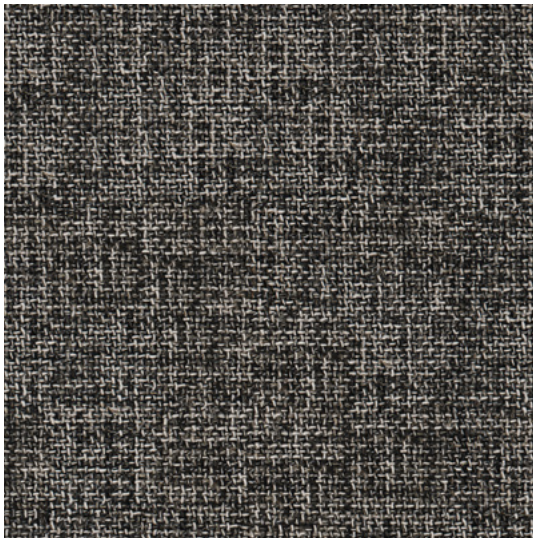


7873 TOPAZ
Natural Elegance Timber



7872 TANZANITE
Natural Elegance Mineral

TAO



7730 MOONLIGHT

Material
Material 50% Baumwolle/*Cotton*
21% Polyacryl/*Polyacrylic*
13% Polyester/*Polyester*
9% Leinen/*Linen*
7% Polyamid/*Polyamide*

Stoffart
Fabric type Flachgewebe
Flat woven fabric

Scheuertouren
Martindale cycles 45.000

Lichtechtheit
Fastness to light 4–6 (ISO 1–8)

Brandschutz
Fire protection Cal. TB 117-2013

Pflegehinweise
Care cleaning



Preisgruppe
Price group 26



7732 SILVER
Natural Elegance Moonlight



7733 PLATIN
Natural Elegance Moonlight

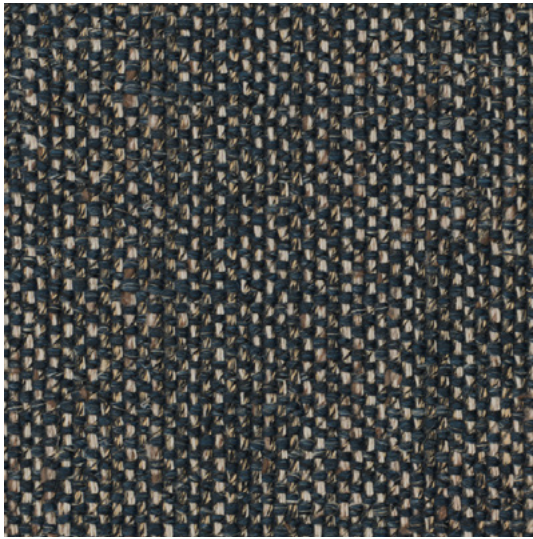


7734 CHOCOLATE
Natural Elegance Chocolate



7730 MOONLIGHT
Natural Elegance Moonlight

TOGBA



7852 BLUE BRONZE

Material
Material 41% Viskose/*Viscose*
26% Polyacryl/*Polyacrylic*
18% Baumwolle/*Cotton*
7% Leinen/*Linen*
7% Polyester/*Polyester*
1% Seide/*Silk*

Stoffart
Fabric type Flachgewebe
Flat woven fabric

Scheuertouren
Martindale cycles 16.000

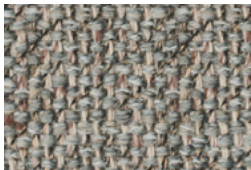
Lichtechtheit
Fastness to light 5 (ISO 1–8)

Brandschutz
Fire protection BS 5852 Part 1 Ignition Source 0
BS 5852 Part 1 Ignition Source 1
Cal. TB 117-2013

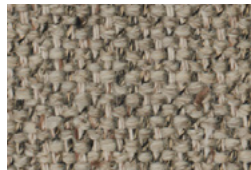
Pflegehinweise
Care cleaning



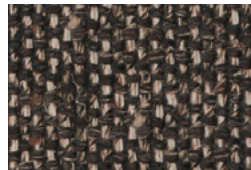
Preisgruppe
Price group 25



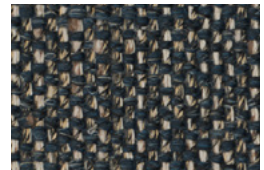
7854 PEBBLE
Natural Elegance Mineral



7855 SAHARA
Natural Elegance Pearl



7850 TOBACCO
Natural Elegance Chocolate





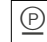


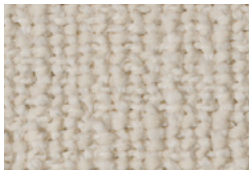
7852 BLUE BRONZE
Natural Elegance Mineral

TONGA



7620 MINERAL

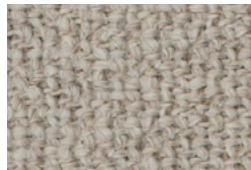
Material <i>Material</i>	48% Polyacryl/ <i>Polyacrylic</i> 24% Wolle/ <i>Wool</i> 12% Polyester/ <i>Polyester</i> 10% Nylon/ <i>Nylon</i> 6% Baumwolle/ <i>Cotton</i>
Stoffart <i>Fabric type</i>	Flachgewebe mit Fleckschutz <i>Flat woven fabric with spot protection</i>
Scheuertouren <i>Martindale cycles</i>	35.000
Lichtechtheit <i>Fastness to light</i>	4–5 (ISO 1–8)
Brandschutz <i>Fire protection</i>	BS 5852 Part 1 Ignition Source 0 BS 5852 Part 1 Ignition Source 1 Cal. TB 117-2013
Pflegehinweise <i>Care cleaning</i>	    
Preisgruppe <i>Price group</i>	25



7615 OFF WHITE
Natural Elegance Off White



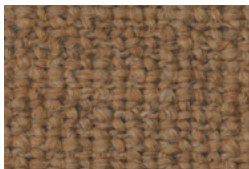
7618 SHADOW
Natural Elegance Shadow



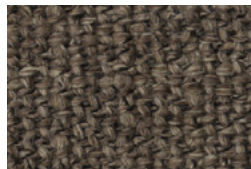
7621 CHALK
Natural Elegance Pearl



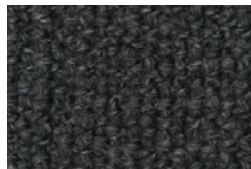
7623 SAHARA
Natural Elegance Atacama



7622 AMBER
Natural Elegance Atacama



7620 MINERAL
Natural Elegance Pearl








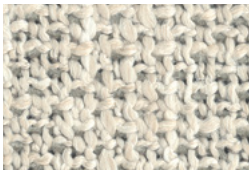
7617 CHESS
Natural Elegance Chess

WEAVE

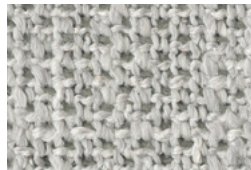


7755 SHADOW

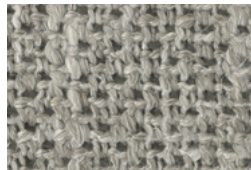
Material	50% Leinen/ <i>Linen</i>
Material	19% Baumwolle/ <i>Cotton</i>
	14% Viskose/ <i>Viscose</i>
	10% Polyacryl/ <i>Polyacrylic</i>
	7% Nylon/ <i>Nylon</i>
Stoffart	Flachgewebe
Fabric type	Flat woven fabric
Scheuertouren	15.000
Martindale cycles	
Lichtechtheit	4 – 5 (ISO 1 – 8)
Fastness to light	
Brandschutz	BS 5852 Part 1 Ignition Source 0
Fire protection	BS 5852 Part 1 Ignition Source 1
Pflegehinweise	    
Care cleaning	
Preisgruppe	28
Price group	



7757 PEARL
Natural Elegance Pearl



7756 SILVER
Natural Elegance Shadow



7755 SHADOW
Natural Elegance Shadow

»NATURAL ELEGANCE« FARBWELTEN – STOFFE /
»Natural Elegance« color worlds – fabrics



»AFRICA I«

10 Stoffe/fabrics

*Lino 7895 cinnamon
 Harald 512 pumpkin
 Kimali 7690 carnelian
 Lucia 7686 tomato
 Harald 612 rose
 Lino 7899 magnolia
 Loft 7744 rose quartz
 Lino 7896 blush rose
 Savannah 7882 rose
 Gaia 7889 champagne*

»AFRICA II«

10 Stoffe/fabrics

*Harald 443 amber
 Lucia 7694 corn
 Harald 823 jade
 Lucia 7689 lime
 Lucia 7688 turquoise
 Kimali 7692 bluewash
 Kimali 7693 aqua
 Gaia 7886 tourmaline
 Loft 7742 azure
 Lino 7897 denim*

»AFRICA III«

10 Stoffe/fabrics

*Namib 7923 rooibos
 Lino 7895 cinnamon
 Namib 7922 marula
 Lino 7894 rye
 Harald 823 jade
 Namib 7926 reed
 Lino 7897 denim
 Namib 7925 aqua
 Lino 7896 blush rose
 Namib 7927 red sand*

»ATACAMA«

10 Stoffe/fabrics

*Lucia 7695 nutmeg
 Tonga 7622 amber
 Puro 7759 mineral
 Lucia 7698 cinnamon
 Tonga 7623 sahara
 Puro 7751 melange
 Doux 7841 sand
 Garbo 7845 almond
 Bogar 7831 macchiato
 Puro 7753 sisal*

»CHESS«

9 Stoffe/fabrics

*Namib 7920 moon
 Gaia 7891 platin
 Garbo 7736 chess
 Harald 182 dark jade
 Tonga 7617 chess
 Harald 792 ocean
 Hearth 011 undersea
 Safire 0012 sky
 Gaia 7885 topaz*

»CHOCOLATE«

9 Stoffe/fabrics

*Savannah 7881 carline
 Lino 7709 timber
 Gaia 7888 quartz
 Tao 7734 chocolate
 Hearth 006 stardust
 Harald 692 aubergine
 Togba 7850 tobacco
 Harald 582 red grape
 Gaia 7887 amethyst*

»ICELAND«

8 Stoffe/fabrics

*Doux 7840 granite
 Savannah 7880 glycine
 Harald 133 silver
 Namib 7924 limestone
 Hearth 013 mystical
 Doux 7842 mineral
 Gaia 7890 silver
 Bogar 7830 nightshade*

»LIMESTONE«

10 Stoffe/fabrics

*Grace 7901 silver
 Puro 7750 cream
 Garbo 7846 shell
 Doux 7843 pebble
 Bogar 7832 platinum
 Savannah 7883 platinum
 Garbo 7847 cashmere
 Savannah 7884 jade
 Harald 143 smoky quartz
 Doux 7844 greige*

»MINERAL«

10 Stoffe/fabrics

*Loft 7741 bark
Togba 7852 blue bronze
Lucia 7681 mineral
Harald 242 mineral
Sorel 7872 tanzanite
Hearth 003 regnant
Lucia 7680 moonlight
Harald 192 black
Togba 7854 pebble
Hearth 009 downfield*

»MOONLIGHT«

8 Stoffe/fabrics

*Lino 7714 coal
Harald 652 blue grey
Lino 7708 moonlight
Tao 7732 silver
Lino 7707 shadow
Tao 7730 moonlight
Garbo 7738 moonlight
Tao 7733 platin*

»OFF WHITE«

9 Stoffe/fabrics

*Gaia 7892 linen
Hearth 001 wedding
Safire 0014 desert
Hearth 007 amphitheater
Tonga 7615 off white
Lucia 7685 off white
Lino 7705 off white
Glint 7764 melange
Safire 0007 champagne*

»PEARL«

10 Stoffe/fabrics

*Weave 7757 pearl
Garbo 7737 pearl
Carrara 7656 pearl
Namib 7921 oryx
Grace 7900 golden sand
Togba 7855 sahara
Lino 7706 pearl
Tonga 7621 chalk
Grace 7902 steel
Tonga 7620 mineral*

»SHADOW«

10 Stoffe/fabrics

*Glint 7762 ash
Tonga 7618 shadow
Glint 7760 steel
Weave 7756 silver
Puro 7752 shadow
Glint 7761 shadow
Weave 7755 shadow
Glint 7763 silver
Safire 0006 sage
Glint 7778 stone*

»TIMBER«

7 Stoffe/fabrics

*Sorel 7873 topaz
Sorel 7871 smoke quartz
Garbo 7735 timber
Sorel 7870 tourmaline
Loft 7740 timber
Harald 143 smoky quartz
Safire 0004 soil*

